



Dovea GENETICS

Maximizing Your Herd's Genetic Potential

Dairy Directory

2022



Introduction

Welcome to the Dovea Genetics Dairy Directory 2022. We are delighted to provide a wide range of dairy bulls to suit all farming systems. This directory contains our high EBI sires (genomic & daughter proven), pure Friesian sires (genomic & daughter proven) and some of our imported Holstein sires (genomic & daughter proven). In addition to this directory a Coloured Sires Directory 2022 and an Elite Production Sires Directory Autumn 2021 are also available.

We are delighted to be at the forefront of cutting-edge technology for our customers by signing a contract with Sexing Technologies for an Irish based sexed semen laboratory during 2021. This will allow a wider range of our dairy & beef bulls to be available as sexed semen. Our range of sexed dairy sires can be seen in this directory.

We have a new Dairy Beef Directory 2022 which contains an excellent selection of beef bulls specially selected for the dairy heifer and dairy cow. There is a wide range of bulls within each breed to suit every farming system. The new initiatives for the dairy beef market are sexed male and sexed female semen from some of our dairy beef bulls and our Triple range. There may be bulls or breeds of interest in this directory so please ask your Area Representative or A.I. Technician for a copy and to recommend bulls to you for your farming system.

If you have any questions, please do not hesitate to contact your Area Representative, A.I. Technician, Dovea Office via phone (0504-21755) or via email info@doveagenetics.ie. Please see our social media platforms for regular updates during the year



What do our catalogue symbols mean?



Sire Available as Sexed Semen



Easy Calving & under 5.5% difficulty with 90% reliability on heifers in country of origin



Transmits high levels of Fat & Protein in milk produced



Sires who carry genes that produce highly fertile daughters



Sires who transmit disease resistant genetics with a Health index at €12 or above



Identifies a sire with a balanced EBI with no extremities



QR code to most recent ICBF figures to scan via camera on your smart phone



Transmits strength with a positive chest & rumps or transmits 5 & 6 in their aAa code



Maintenance of €12 or above who will produce offspring with a lower stature



A sire who has a gestation at least 4 days shorter than average with 90% reliability



Transmits the desired traits for robotic milking, from a EX dam and/or positive milking speed, health, teat placement & production



Carry the A2A2 variant of the Beta Casein gene



Sire with a conformation score of 1.5 or above



Carries the red gene for coat colour

Index

Symbols Key

Dovea Genetics Sire Advice

Top Lists

Page

Code

Name

Page

2
2/3

Sexed Semen Sires

Code	Bull	Page
FR6484	Riverside Pivotal 874 SRM	4
FR5860	Saintbrigid Frank Joseph	5
FR6481	Browney Barna SRM	6
FR6622	Bawngarra Bród	7
FR6499	Ballydunne Olaf	8
FR5704	Hillsdale Mo Salah	8
FR4785	Glenaboy Ronald	9
FR6472	Ardallen Fergus	10
JE6769	Crovilla Coachmans	10
NR5881	Roen	11
JE4764	Nextgen Hitman	11

High EBI Genomic

FR7758	Hillsdale Michael J	12
FR7692	Ballydunne Pumbaa	12
FR7839	Glenaboy Tumeer SRM	13
FR7755	Clonlahy Boy	13
FR7677	Calhame Barney SRM	14
FR7680	Cappasouth Leo SRM	14
FR7752	Olcastletown Casper	15
FR7746	Foyfin Tommy SRM	15
FR7038	Dungorman Eddie SRM	16
FR6625	Dollsturn Jimbob SRM	16
FR6469	Tinnakill Navigator	17
FR6520	Toureen Taurin Tim	17
FR7686	Rossen Paddy SRM	18
FR7782	Jeanjo Acer SRM	18
FR7683	Highpark Aaron SRM	19
FR7749	Ballintosig Mister Man	19
FR7767	Glenaboy Special One	20
FR7071	Tullerstown Podge	20
FR6718	Garrendenny Lewis SRM	21
FR6628	Cullohill Samir SRM	21
FR6616	Droumnacara Lily Dylan SRM	22
FR6535	Coolnacusha Tim SRM	22
FR6475	Gortcreen Van Dijk	23
FR6523	Browney Lisna	23
FR6631	Ballykinash Samuel	24
FR7080	Derrinsallow Neymar	24
FR5848	Riverside Harold SRM	25
FR5857	Olcastletown Tiernan	25
FR6880	Meander Aladiesman-ET	26
FR4788	Scorduff Neart	26
FR6829	Scartflesk John	26

High EBI Daughter Proven

FR4428	Jeanjo Art	27
FJM	Doonmanagh HMY Mossy	28
FR2232	Clochrua Randy Levi	28
FR2249	Coolnasoon Art	29
FR4154	Haggard Franko	29
FR4397	Craigtown Storm	30
FR4439	Killalough Samir	30

Friesian-Holstein Blend

FR7791	Barrackhill Reuben	31
FR2275	Stonecarthy Gleanna	31
TFZ	Fortfergus Artic Orca	32
	Golden Oldies	32

Pure Friesian

FR8061	Fairylawn Bernard 2387	33
FR8070	Kilsunny Herbert 2	33
FR4756	Firoda Jubilaris 11	34
FR5770	Firoda Jubilaris 22	34
FR4754	Raheenarran Mr Doyle 2	35
FR5476	Jaap Van Nooreinde	35
FR6808	Firoda Jubilaris 28	35
FOE	Firoda Meinse 2	36
FR4133	Raheenarran Mr Potter	36
FR6166	Jan 10	37
FR4317	Bloemplaat Hoeve Ewoud	37
FR4435	Kirkby Harrier	38
FR4424	Lismulligan Excalibur	38
FR2306	Bernard 28	39
FR2276	Firoda Randy 7	39

Holstein Grazing Sires

FR6376	Slash	40
FR7647	Macgyver Van De Peul	40
FR7554	Go-Farm Inseme Sprite	41
FR7653	Go-Farm Miura ET	41
FR6463	Co-op Aardema Berry Blak-ET	42
FR5746	Weggelhorster Disclosure	42
FR5722	Youri	43
S706	Timmer Climax	43
FR6460	MB Amax RDC	44
FR7539	Peak Notice-PP-ET	44
S2181	Batenburg Michael	45
FR6832	J&G Marsman	45
FR6466	Farmers Wish Exloer Caruso	46
FR7836	WR Centrum	46

Other Catalogues Available 47

DIY Guide/ Nitrogen Service/ AI Courses 48

Area Representatives 49

Dovea Genetics Sire Advice

How does it work?

Dovea Genetics offer a free one to one Sire Advisory Service to farmers which matches our most suitable sires to the cows & heifers in your herd. Together with a member of the advisory service a specific group of bulls will be selected based on your co-op performance report, EBI and your individual breeding goals.

The Dovea mating programme can also help identify the cows in your herd that should be targeted with dairy or beef semen. By targeting the best dairy semen on the most efficient & profitable cows in your herd you can accelerate the rate of genetic gain in your 2023 replacements. Once the bull team is finalised the sires will be ran through the ICBF Herd Plus Sire Advice Mating Programme where the three best matings are listed for each individual cow.

Breeding Chart

You will receive a free breeding chart in the post along with a digital copy through Whatsapp and Email. A breeding chart allows farmers to have full visibility of planned matings, recorded serves, and heats.

How do I Get involved?

Contact **Marty Hayes Sire Advice Specialist in Dovea Genetics on 0873284317 or email mhayes@doveagenetics.ie** to receive your one to one sire advice consultation.

Benefits

- Specialised Individual Matings
- Protects Against Inbreeding
- Improve Traits that are Important to You
- Breed the Most Profitable Females
- Helps Plan & Monitor Semen Stocks
- Matings Sent directly to Technicians Handheld

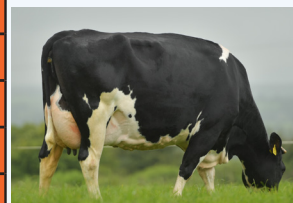


Bull Teams

4% PROTEIN DAMS										
Details				Sub Indexes					Production	
Code	PG	Name	Lactation	Calv. Int	Milk Kg	Fat Kg	Pro Kg	Fat %	Pro %	Kg's Solids
JE4764	11	NEXTGEN HITMAN	6	372	4718	275	210	5.83	4.45	485
FR5848	25	RIVERSIDE HAROLD	3	377	9201	418	396	4.54	4.31	814
FR4785	9	GLENABOY RONALD	5	367	8174	424	346	5.26	4.25	770
FR7767	20	GLENABOY SPECIAL ONE	5	367	8174	424	346	5.26	4.25	770
FR6616	22	LILY DYLAN SRM	3	370	5796	301	243	5.18	4.19	544
FR7749	19	BALLINTOSSIG MISTERMAN	1	N/A	5954	271	241	4.55	4.06	512
FR6625	16	DOLLSTURN JIMBOB	5	368	5702	267	231	4.67	4.03	498
FR6472	10	ARDALLEN FERGUS	6	366	6763	304	272	4.48	4.02	576
FR6469	17	TINNAKILL NAVIGATOR	7	365	6223	307	249	4.92	4.01	556
FR7683	19	HIGHPARK AARON	2	346	6513	273	261	4.20	4.01	533
FR6628	21	CULLOHILL SAMIR SRM	4	368	5157	578	206	5.39	4.00	484
AVG			4.2	366	6580	349	273	4.94	4.14	595

PROTEIN % LEADER

Details				Sub Indexes					Production				
CODE	PG	NAME	EBI	Prod	Fert	Calv	Maint	Health	M Kg	F Kg	P Kg	F %	P %
FR5848	25	RIVERSIDE HAROLD SRM	€296	€106	€145	€36	€7	€0	-35	13	13	0.26	0.24
FR7749	19	BALLINTOSIG MISTER MAN	€332	€134	€122	€50	€12	€14	120	22	17	0.29	0.22
FR6472	10	ARDALLEN FERGUS	€310	€109	€125	€39	€9	€17	31	17	13	0.28	0.21
FR6628	21	CULLOHILL SAMIR SRM	€309	€99	€149	€55	€23	€13	-128	22	7	0.48	0.21
FR4439	30	KILLALOUGH SAMIR	€251	€102	€106	€39	€15	€8	-48	18	10	0.36	0.21
FR6520	17	TOUREEN TUAIRIN TIM	€335	€80	€198	€43	€15	€7	-126	13	7	0.33	0.2
FR7767	20	GLENABOY SPECIAL ONE	€310	€123	€115	€54	€7	€14	70	22	14	0.34	0.2



FAT % LEADERS

Details				Sub Indexes					Production				
CODE	PG	NAME	EBI	Prod	Fert	Calv	Maint	Health	M Kg	F Kg	P Kg	F %	P %
FR6628	21	CULLOHILL SAMIR SRM	€309	€99	€149	€55	€23	€13	-123	22	7	0.48	0.21
FR4439	30	KILLALOUGH SAMIR	€251	€102	€106	€39	€15	€8	-48	18	10	0.36	0.21
FR7767	20	GLENABOY SPECIAL ONE	€310	€123	€115	€54	€7	€14	70	22	14	0.34	0.2
TFZ	32	FORTFERGUS ARTIC ORCA	€202	€109	€57	€28	€26	€4	26	21	12	0.34	0.19
FR6520	17	TOUREEN TUAIRIN TIM	€335	€80	€198	€43	€15	€7	-126	13	7	0.33	0.2
FR4788	26	SCORDUFF NEART	€272	€106	€117	€33	€12	€18	21	20	11	0.33	0.19



MAINTENANCE LEADERS

Details				Sub Indexes					Production				
CODE	PG	NAME	EBI	Prod	Fert	Calv	Maint	Health	M Kg	F Kg	P Kg	F %	P %
FR6625	16	DOLLSTURN JIMBOB SRM	€338	€89	€189	€50	€29	€17	-42	16	9	0.31	0.18
FR6628	21	CULLOHILL SAMIR SRM	€309	€99	€149	€55	€23	€13	-128	22	7	0.48	0.21
FR6484	4	RIVERSIDE PIVOTAL 874 SRM	€360	€104	€177	€60	€18	€16	130	18	13	0.21	0.15
FR6469	17	TINNAKILL NAVIGATOR	€334	€81	€193	€41	€17	€15	-32	14	8	0.27	0.17
FR7791	31	BARRACKHILL REUBEN	€371	€96	€199	€51	€16	€11	5	16	11	0.27	0.18
FR7686	18	ROSSEN PADDY SRM	€339	€110	€154	€58	€16	€12	234	19	16	0.16	0.13



PROVEN EASY CALVING TEAM

Details				Sub Indexes					Calving Sub Index		
CODE	PG	NAME	EBI	Prod	Fert	Calv	Maint	Health	Gestation	CowC.D.	HeiferC.D.
FR5860	5	SAINTBRIGID FRANK JOSEPH	€317	€99	€154	€65	€4	€11	-6.05	2.06%	4.13%
FR2232	28	CLOCHRUA RANDY LEVI	€232	€96	€72	€54	€21	€4	-4.94	1.84%	4.19%
FR5704	8	HILLSDALE MO SALAH	€303	€128	€104	€52	-€2	€10	-4.57	2.30%	5.12%
FR4154	29	HAGGARD FRANKO	€228	€90	€90	€49	€9	-€4	-4.32	2.22%	5.01%
FR4785	9	GLENABOY RONALD	€286	€114	€103	€46	€5	€16	-3.34	1.98%	4.64%



RIVERSIDE PIVOTAL 874 SRM

FR6484

International ID

HOLIRLM224041541874

aAa: 243



J. McNerney, Newmarket-on-Fergus, Co. Clare

Riverside SEW Marg 1477 VG85 - Dam



Riverside SEW Marg 1477 VG85 - Dam



DAM - 305 Day Milk Records								
Lact.	Calved	Calv. Int	Milk Kg	Fat Kg	Pro Kg	Fat %	Pro %	Kg's Solids
2	07/03/2020	386	7883	351	306	4.46	3.88	657
Avg	3	377	7883	350	301	4.46	3.83	651

GDAM - 305 Day Milk Records								
Lact.	Calved	Calv. Int	Milk Kg	Fat Kg	Pro Kg	Fat %	Pro %	Kg's Solids
3	04/02/2019	N/A	8671	392	382	4.52	4.41	774
Avg	3	377	9201	418	396	4.54	4.31	814

FR4728 X SEW X HDJ

- Dovea's Highest EBI Bull Available Sexed
- Maintenance Specialist with Components
- Production, Fertility & Health
- **Available Sexed Ultra 4M**

EBI JAN. 22	SOURCE	ICBF	REL
EBI	360		54%
Prod. SI	104		74%
Fert. SI	177		38%
Calv. SI	60		56%
Beef. SI	-18		44%
Maint. SI	18		39%
Mgmt. SI	4		59%
Health SI	16		66%

PRODUCTION					
Milk Kg	Fat Kg	Protein Kg	Solid Kg	Fat %	Prot %
130	18	13	31	0.21	0.15



FERTILITY	
Calving Interval	Survival
-10.23	3.88%

CALVING		
Gestation	Dairy Cow	Dairy Heifer
-5.02 (60% Rel.)	1.56 (64% Rel.)	4.18 (59% Rel.)

SAINTBRIGID FRANK JOSEPH

FR5860

International ID

HOLIRLM222741641425

aAa: 156

PED

FR 25%



Saintbrigid Frank Joseph FR5860



Saintbrigid Molly 14 - Dam



DAM - 305 Day Milk Records								
Lact.	Calved	Calv. Int	Milk Kg	Fat Kg	Pro Kg	Fat %	Pro %	Kg's Solids
3	02/02/2021	352	6682	322	276	4.82	4.13	598
Avg	3	370	6409	282	247	4.39	3.85	529

GDAM - 305 Day Milk Records								
Lact.	Calved	Calv. Int	Milk Kg	Fat Kg	Pro Kg	Fat %	Pro %	Kg's Solids
4	23/01/2017	372	7902	311	305	3.94	3.86	616
Avg	6	389	7030	300	267	4.27	3.80	567

FR4154 X FR2275 X WDS

- No. 1 Pedigree Holstein Friesian Bull on ICBF Active Bull List
- Suitable for Heifers
- Outcross Pedigree
- Impressive Black Youngstock
- 4% Protein Dam
- Available Sexed Ultra 4M

EBI	JAN. 22	SOURCE	ICBF	REL
EBI	317			63%
Prod. SI	99			79%
Fert. SI	154			46%
Calv. SI	65			87%
Beef. SI	-19			54%
Maint. SI	4			48%
Mgmt. SI	5			60%
Health SI	11			68%

PRODUCTION					
Milk Kg	Fat Kg	Protein Kg	Solid Kg	Fat %	Prot %
111	15	13	28	0.18	0.16



FERTILITY	
Calving Interval	Survival
-8.69	3.58%

CALVING		
Gestation	Dairy Cow	Dairy Heifer
-6.05 (99% Rel.)	2.06 (95% Rel.)	4.13 (91% Rel.)

High EBI Genomic Sexed

High EBI Genomic Sexed

BROWNEY BARNA SRM

FR6481

International ID

HOLIRLM215094012238

aAa: 423



T. J. Kearney, Rathcormac, Co. Cork



Browney LWR Alice 1529 VG87 - Dam



Browney LWR Alice 1529 VG87 - Dam

DAM - 305 Day Milk Records								
Lact.	Calved	Calv. Int	Milk Kg	Fat Kg	Pro Kg	Fat %	Pro %	Kg's Solids
4	26/02/2021	382	8734	376	327	4.30	3.74	703
Avg	4	378	7131	306	265	4.28	3.71	571

GDAM - 305 Day Milk Records								
Lact.	Calved	Calv. Int	Milk Kg	Fat Kg	Pro Kg	Fat %	Pro %	Kg's Solids
3	02/02/2018	367	7467	302	276	4.05	3.70	578
Avg	6	365	6712	275	240	4.13	3.59	515

FR4717 X LWR X PBM

- **Fertility Leader with 32kg Milk Solids**
- **Health & SCC Improver**
- **Great Components (+0.26% Fat & +0.17% Protein)**
- **Available Sexed Ultra 4M**

EBI	JAN. 22	SOURCE	ICBF	REL
EBI	352			53%
Prod. SI	109			70%
Fert. SI	168			38%
Calv. SI	49			56%
Beef. SI	-3			45%
Maint. SI	7			39%
Mgmt. SI	6			57%
Health SI	16			63%

PRODUCTION					
Milk Kg	Fat Kg	Protein Kg	Solid Kg	Fat %	Prot %
100	19	13	32	0.26	0.17



FERTILITY	
Calving Interval	Survival
-10.50	2.91%

CALVING		
Gestation	Dairy Cow	Dairy Heifer
-4.55 (61% Rel.)	1.96 (64% Rel.)	5.94 (57% Rel.)

BAWNGARRA BRÓD

FR6622

International ID

HOLIRLM213308651573

aAa: 351

PED

FR 19%

G. Dooley, Portlaoise, Co. Laois



Bawngarra Evert Beauty 1048 - Dam



Bawngarra Evert Beauty 1048 - Dam



DAM - 305 Day Milk Records								
Lact.	Calved	Calv. Int	Milk Kg	Fat Kg	Pro Kg	Fat %	Pro %	Kg's Solids
5	06/02/2020	349	9319	394	363	4.23	3.90	757
Avg	6	378	8037	351	303	4.38	3.77	653

FR4547 X LHZ X FLT

- Protein Specialist
- Great Combination of Solids & Fertility
- Medium Sized Dam with 3.9% Protein
- Farmer Favourite 2021
- Available Sexed Ultra 4M

EBI JAN. 22	SOURCE ICBF	REL
EBI	312	57%
Prod. SI	110	77%
Fert. SI	137	44%
Calv. SI	52	56%
Beef. SI	-8	45%
Maint. SI	9	42%
Mgmt. SI	3	58%
Health SI	7	63%

PRODUCTION					
Milk Kg	Fat Kg	Protein Kg	Solid Kg	Fat %	Prot %
101	16	15	31	0.21	0.19



FERTILITY	
Calving Interval	Survival
-7.07	3.83%

CALVING		
Gestation	Dairy Cow	Dairy Heifer
-4.20 (61%Rel.)	1.76 (62% Rel.)	4.09 (56% Rel.)

High EBI Genomic Sexed

FR6499 BALLYDUNNE OLAF

International ID

HOLIRLM223733790823

aAa: 342

FR 22%
PED

S. P. Murphy, Rathmoyle, Co. Kilkenny



DoveaGENETICS

Castleblagh FR2298 Graine - Dam



DAM - 305 Day Milk Records								
Lact.	Calved	Calv. Int	Milk Kg	Fat Kg	Pro Kg	Fat %	Pro %	Kg's Solids
2	22/01/2021	386	8368	329	309	3.93	3.70	638
Avg	2	386	7273	293	268	4.05	3.69	561

FR4513 X FR2298 X LHZ

- Components Bull
- Exceptional, Well Balanced EBI
- Superb Longevity in Family
- **Available Sexed Ultra 4M**

EBI	JAN. 22	SOURCE	ICBF	REL
324	59%			
Prod. SI	113	78%		
Fert. SI	135	46%		
Calv. SI	54	54%		
Beef. SI	-4	46%		
Maint. SI	9	45%		
Mgmt. SI	13	59%		
Health SI	5	67%		



PRODUCTION					
Milk Kg	Fat Kg	Protein Kg	Solid Kg	Fat %	Prot %
121	19	14	33	0.24	0.18

FERTILITY	
Calving Interval	Survival
-7.45	3.28%

CALVING		
Gestation	Dairy Cow	Dairy Heifer
-5.28 (54% Rel.)	2.64 (65% Rel.)	6.87 (62% Rel.)

FR5704 HILLSDALE MO SALAH

International ID

HOLIRLM213671841324

aAa: 423

FR 13%
PED

K. Hegarty, Kilworth, Co. Cork



DoveaGENETICS

Hillsdale YGB Lass EX90 - Dam



DAM - 305 Day Milk Records								
Lact.	Calved	Calv. Int	Milk Kg	Fat Kg	Pro Kg	Fat %	Pro %	Kg's Solids
5	05/02/2021	315	8919	373	335	4.19	3.76	708
Avg	5	366	8049	317	297	3.94	3.68	614

FR2298 X YGB X AWB

- 41kg of Solids with +0.12% Protein
- Milk Kg Improver
- 3 Generations Milking on Farm
- Easy Calving - Suitable for Heifers
- **Available Sexed Ultra 4M**

EBI	JAN. 22	SOURCE	ICBF	REL
303	66%			
Prod. SI	128	80%		
Fert. SI	104	51%		
Calv. SI	52	90%		
Beef. SI	6	56%		
Maint. SI	-2	52%		
Mgmt. SI	5	62%		
Health SI	10	72%		



PRODUCTION					
Milk Kg	Fat Kg	Protein Kg	Solid Kg	Fat %	Prot %
435	19	22	41	0.03	0.12

FERTILITY	
Calving Interval	Survival
-5.97	2.31%

CALVING		
Gestation	Dairy Cow	Dairy Heifer
-4.57 (99% Rel.)	2.30 (98% Rel.)	5.12 (95% Rel.)

GLENABOY RONALD

International ID

HOLIRLM223088231282

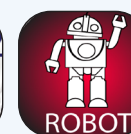
aAa: 423

PED

FR
22%



Glenaboy HDJ Daisy EX90 - Dam



Glenaboy HDJ Daisy EX90 - Dam

DAM - 305 Day Milk Records								
Lact.	Calved	Calv. Int	Milk Kg	Fat Kg	Pro Kg	Fat %	Pro %	Kg's Solids
3	20/01/2019	357	8256	433	362	5.24	4.39	795
Avg	5	367	8174	424	346	5.26	4.25	770

GDAM - 305 Day Milk Records								
Lact.	Calved	Calv. Int	Milk Kg	Fat Kg	Pro Kg	Fat %	Pro %	Kg's Solids
3	22/01/2017	369	6959	301	280	4.33	4.02	581
Avg	7	366	7501	325	296	4.36	3.95	621

FR2298 X HDJ X HMY

- **Nothing Compares to Ronald**
- **Bred from Ireland's No.1 Milk Sub-Index Cow**
- **Dam won IHFA EBI Cow of the Year 2021**
- **4.4% Protein Dam (Calved in January Every Year)**
- **Impressive Daughters Beginning to Calve**
- **Easy Calving - Suitable for Heifers**
- **Available Sexed Ultra 4M**

EBI	JAN. 22	SOURCE	ICBF	REL
EBI	286			65%
Prod. SI	114			80%
Fert. SI	103			47%
Calv. SI	46			89%
Beef. SI	-8			67%
Maint. SI	11			51%
Mgmt. SI	5			57%
Health SI	16			69%

PRODUCTION					
Milk Kg	Fat Kg	Protein Kg	Solid Kg	Fat %	Prot %
106	19	14	33	0.26	0.18



FERTILITY	
Calving Interval	Survival
-5.59	2.62%

CALVING		
Gestation	Dairy Cow	Dairy Heifer
-3.34 (99% Rel.)	1.98 (98% Rel.)	4.64 (99% Rel.)

High EBI Genomic Sexed

FR6472 ARDALLEN FERGUS

International ID

HOLIRLM213520241742

aAa: 234

PED

FR
22%

I. Ferguson, Lifford, Co. Donegal



DoveaGENETICS

Ardallen LHZ Karina VG 88 - Dam



DAM - 305 Day Milk Records

Lact.	Calved	Calv. Int	Milk Kg	Fat Kg	Pro Kg	Fat %	Pro %	Kg's Solids
5	17/02/2020	350	8083	359	327	4.45	4.04	686
Avg	6	366	6763	304	272	4.48	4.02	576

FR4513 X LHZ X SOK

- The Protein Specialist at +0.21%
- Fertility, Health & 30kg of Solids
- Medium Sized Dam with 4% Protein
- **Available Sexed Ultra 4M**

EBI	JAN. 22	SOURCE	ICBF	REL
310	59%			
Prod. SI	109	79%		
Fert. SI	125	47%		
Calv. SI	39	51%		
Beef. SI	1	47%		
Maint. SI	9	46%		
Mgmt. SI	10	61%		
Health SI	17	67%		



PRODUCTION

Milk Kg	Fat Kg	Protein Kg	Solid Kg	Fat %	Prot %
31	17	13	30	0.28	0.21

FERTILITY

Calving Interval	Survival
-6.37	3.57%

CALVING

Gestation	Dairy Cow	Dairy Heifer
-4.27	2.60	7.55
(49% Rel.)	(64% Rel.)	(57% Rel.)

JE6769 CROVILLA COACHMANS

International ID

HOLIRLM218009562317

aAa: 561

XSR

M. Crowley, Skibbereen, Co. Cork



DoveaGENETICS

Dam of Crovilla Coachmans



DAM - 305 Day Milk Records

Lact.	Calved	Calv. Int	Milk Kg	Fat Kg	Pro Kg	Fat %	Pro %	Kg's Solids
1	06/02/2020	N/A	5364	266	195	4.96	3.63	461
Avg	2	385	5744	270	207	4.72	3.61	478

JE4289 X IE141296621524 X RXR

- Mega EBI Crossbred Sire €276
- Health Improver
- Sky High Maintenance of €24
- Exceptional Fat Components (+0.37%)
- **Available Sexed Ultra 4M**



EBI	JAN. 22	SOURCE	ICBF	REL
276	56%			
Prod. SI	94	76%		
Fert. SI	119	43%		
Calv. SI	45	48%		
Beef. SI	-27	45%		
Maint. SI	24	45%		
Mgmt. SI	8	59%		
Health SI	15	63%		

PRODUCTION

Milk Kg	Fat Kg	Protein Kg	Solid Kg	Fat %	Prot %
-17	21	8	29	0.37	0.16

FERTILITY

Calving Interval	Survival
-6.90	2.55%

CALVING

Gestation	Dairy Cow	Dairy Heifer
-3.10	1.65	4.00
(46% Rel.)	(59% Rel.)	(53% Rel.)

NR5881 ROEN

International ID

RDCNORM000000011690

aAa: 516

PED



Roen - NR5881

NORWEGIAN RED Since 1955

DAUGHTER - 305 Day Milk Records

Lact.	Calved	Calv. Int	Milk Kg	Fat Kg	Pro Kg	Fat %	Pro %	Kg's Solids
2			8690	311	385	4.45	3.59	696
Avg	3		8395	299	370	4.43	3.56	669

SKEI X VSK X HAGA

- Highest EBI Norwegian Red Available
- Daughter Proven
- Fertility Specialist
- Excellent Health with Low SCC
- Easy Calving - Suitable for Maiden Heifers
- **Available Sexed**

EBI	JAN. 22	SOURCE	ICBF	REL
257				69%
Prod. SI	58			84%
Fert. SI	132			71%
Calv. SI	38			79%
Beef. SI	-15			42%
Maint. SI	32			37%
Mgmt. SI	-2			49%
Health SI	14			50%

PRODUCTION

Milk Kg	Fat Kg	Protein Kg	Solid Kg	Fat %	Prot %
122	13	7	20	0.14	0.05

FERTILITY

Calving Interval	Survival
-5.73	4.82%

CALVING

Gestation	Dairy Cow	Dairy Heifer
-2.91 (94% Rel.)	2.03 (93% Rel.)	5.20 (65% Rel.)

JE4764 NEXTGEN HITMAN

International ID

JERIRLM226044611566

aAa: 156

PED

Teagasc, Moorepark, Co.Cork



Nextgen Hillstar Penny - Dam

Dovea GENETICS

DAM - 305 Day Milk Records

Lact.	Calved	Calv. Int	Milk Kg	Fat Kg	Pro Kg	Fat %	Pro %	Kg's Solids
4	14/02/2019	367	5084	297	236	5.83	4.65	533
Avg	6	372	4718	275	210	5.83	4.45	485

ZCD X HJT X HIJ

- Massive EBI
- Volume and Percentages
- Bred from the Top Ranking Cow in Teagasc Herd
- Exceptional Udders, Feet & Legs
- Maintenance Figure €53
- **Available Sexed Ultra 4M**

EBI	JAN. 22	SOURCE	ICBF	REL
201				65%
Prod. SI	101			78%
Fert. SI	37			50%
Calv. SI	49			82%
Beef. SI	-56			55%
Maint. SI	53			55%
Mgmt. SI	6			68%
Health SI	9			72%

PRODUCTION

Milk Kg	Fat Kg	Protein Kg	Solid Kg	Fat %	Prot %
-233	15	8	23	0.44	0.30

FERTILITY

Calving Interval	Survival
-0.92	2.05%

CALVING

Gestation	Dairy Cow	Dairy Heifer
-4.00 (96% Rel.)	1.25 (82% Rel.)	2.48 (77% Rel.)

High EBI Sexed

FR7758 HILLSDALE MICHAEL J

International ID

HOLIRLM213671851507

aAa: N/A

PED FR 25%

K. Hegarty, Kilworth, Co. Cork



DoveaGENETICS

Hillsdale KOZ LISA VG88 - Dam



DAM - 305 Day Milk Records								
Lact.	Calved	Calv. Int	Milk Kg	Fat Kg	Pro Kg	Fat %	Pro %	Kg's Solids
3	13/01/2015	328	7154	317	270	4.43	3.77	587
Avg	9	363	7055	306	256	4.34	3.63	562

FR4547 X KOZ X UYC

- New Sire Release
- Component Specialist
- The Perfect All-Round Sire
- Nice Pedigree
- Semen Available in May 2022

EBI	JAN. 22	SOURCE	ICBF	REL
346				58%
Prod. SI	106			78%
Fert. SI	164			43%
Calv. SI	56			56%
Beef. SI	-9			46%
Maint. SI	14			46%
Mgmt. SI	4			56%
Health SI	11			63%



PRODUCTION					
Milk Kg	Fat Kg	Protein Kg	Solid Kg	Fat %	Prot %
68	17	13	30	0.25	0.19

FERTILITY	
Calving Interval	Survival
-9.25	3.82%

CALVING		
Gestation	Dairy Cow	Dairy Heifer
-4.89 (61% Rel.)	1.80 (64% Rel.)	5.14 (56% Rel.)

FR7692 BALLYDUNNE PUMBAA

International ID

HOLIRLM223733730925

aAa: 324

PED FR 16%

S. P. Murphy, Rathmoyle, Co. Kilkenny



DoveaGENETICS

Ballydunne Pumbaa - FR7692



DAM - 305 Day Milk Records								
Lact.	Calved	Calv. Int	Milk Kg	Fat Kg	Pro Kg	Fat %	Pro %	Kg's Solids
2	22/01/2021	386	8368	329	309	3.93	3.70	638
Avg	2	386	7273	293	268	4.05	3.69	561

FR4728 X FR2298 X LHZ

- Red and White with Massive EBI
- Very Well Balanced Bull
- From the Same Dam as Ballydunne Olaf (FR6499)
- Lovely Square Bull
- Limited Semen Available Spring 2022

EBI	JAN. 22	SOURCE	ICBF	REL
338				54%
Prod. SI	117			73%
Fert. SI	146			38%
Calv. SI	55			56%
Beef. SI	-3			44%
Maint. SI	9			39%
Mgmt. SI	1			59%
Health SI	13			65%



PRODUCTION					
Milk Kg	Fat Kg	Protein Kg	Solid Kg	Fat %	Prot %
319	22	17	39	0.16	0.10

FERTILITY	
Calving Interval	Survival
-7.32	4.31%

CALVING		
Gestation	Dairy Cow	Dairy Heifer
-5.28 (59% Rel.)	2.41 (67% Rel.)	5.36 (59% Rel.)

High EBI Genomic

FR7839 GLENABOY TUMEE SRM

International ID

HOLIRLM223088221513

aAa: 423

SRM 19%

K. O'Donoghue, Tallow, Co. Waterford



DoveaGENETICS

Glenaboy Tumee Dam & GDam



DAM - 305 Day Milk Records								
Lact.	Calved	Calv. Int	Milk Kg	Fat Kg	Pro Kg	Fat %	Pro %	Kg's Solids
1	14/01/2020	N/A	6302	279	240	4.42	3.80	519
Avg	2	376	8040	353	312	4.39	3.86	664

FR5704 X FR2005 X RPA

- Health Improver at €24
- Dam SCC of 35,000
- Impressive Index with No Faults
- Medium-Sized, Square Cows
- Outcross Pedigree
- Limited Semen Availability Spring 2022

EBI	JAN. 22	SOURCE	ICBF	REL
EBI	339			53%
Prod. SI	121			73%
Fert. SI	143			38%
Calv. SI	53			56%
Beef. SI	-16			39%
Maint. SI	12			38%
Mgmt. SI	2			57%
Health SI	24			63%



PRODUCTION					
Milk Kg	Fat Kg	Protein Kg	Solid Kg	Fat %	Prot %
227	21	16	37	0.21	0.15

FERTILITY	
Calving Interval	Survival
-8.50	2.87%

CALVING		
Gestation	Dairy Cow	Dairy Heifer
-5.28 (60% Rel.)	2.44 (64% Rel.)	4.77 (55% Rel.)

FR7755 CLONLAHY BOY

International ID

HOLIRLM218079092615

aAa: 243

PED 22%

J. White, Cloneen, Co. Tipperary



DoveaGENETICS

Clonlahy PHC Lass 2271 - Dam



DAM - 305 Day Milk Records								
Lact.	Calved	Calv. Int	Milk Kg	Fat Kg	Pro Kg	Fat %	Pro %	Kg's Solids
1	29/01/2021	N/A	5623	270	214	4.80	3.81	484
Avg								

FR4728 X PHC X HZB

- Grazing Sire
- Milk Sub Index €127
- Fertility Index €148
- 39kg of Milk Solids from 179kg of Milk
- Limited Semen Availability Spring 2022

EBI	JAN. 22	SOURCE	ICBF	REL
EBI	359			53%
Prod. SI	127			71%
Fert. SI	148			38%
Calv. SI	61			57%
Beef. SI	-2			44%
Maint. SI	11			39%
Mgmt. SI	6			60%
Health SI	9			66%



PRODUCTION					
Milk Kg	Fat Kg	Protein Kg	Solid Kg	Fat %	Prot %
179	23	16	39	0.28	0.17

FERTILITY	
Calving Interval	Survival
-8.40	3.38%

CALVING		
Gestation	Dairy Cow	Dairy Heifer
-5.28 (59% Rel.)	1.60 (65% Rel.)	4.53 (63% Rel.)

FR7677 CALHAME BARNEY SRM

International ID

HOLIRLM224295211058

aAa: 423

SRM 22%

V. McNamee, Convoy, Co. Donegal



DoveaGENETICS

Calhame Romy 913 - Dam



DAM - 305 Day Milk Records								
Lact.	Calved	Calv. Int	Milk Kg	Fat Kg	Pro Kg	Fat %	Pro %	Kg's Solids
1	17/02/2021	N/A	4248	220	164	5.17	3.87	384

FR4728 X FR4428 X SEW

- Ultra High EBI Sire at €363
- Combines High Milk Solids with Fertility
- Milk Solids +38kg
- Medium-Sized, Strong Cows
- Limited Semen Availability Spring 2022

EBI	JAN. 22	SOURCE	ICBF	REL
363	51%			
Prod. SI	122	69%		
Fert. SI	171	36%		
Calv. SI	56	55%		
Beef. SI	-10	44%		
Maint. SI	13	39%		
Mgmt. SI	4	55%		
Health SI	7	60%		



PRODUCTION					
Milk Kg	Fat Kg	Protein Kg	Solid Kg	Fat %	Prot %
206	22	16	38	0.24	0.15

FERTILITY	
Calving Interval	Survival
-9.56	4.11%

CALVING		
Gestation	Dairy Cow	Dairy Heifer
-5.13 (59% Rel.)	1.93 (62% Rel.)	5.77 (60% Rel.)

FR7680 CAPPASOUTH LEO SRM

International ID

HOLIRLM216499932445

aAa: 642

SRM 25%

J. Lynch, Sixmilebridge, Co. Clare



DoveaGENETICS

Cappasouth Ardkyle Leo - Dam



DAM - 305 Day Milk Records								
Lact.	Calved	Calv. Int	Milk Kg	Fat Kg	Pro Kg	Fat %	Pro %	Kg's Solids
1	02/02/2021	N/A	7854	310	279	3.94	3.55	589

FR5860 X YKA X RUU

- Super Grazing Sire
- Component Specialist (+0.27% Fat & +0.19% Protein)
- 27 kg of Milk Solids
- Feet & Legs Improver (aAa: 642)
- Limited Semen Availability Spring 2022

EBI	JAN. 22	SOURCE	ICBF	REL
336	51%			
Prod. SI	97	70%		
Fert. SI	172	36%		
Calv. SI	56	54%		
Beef. SI	-18	39%		
Maint. SI	10	38%		
Mgmt. SI	1	55%		
Health SI	18	61%		



PRODUCTION					
Milk Kg	Fat Kg	Protein Kg	Solid Kg	Fat %	Prot %
5	16	11	27	0.27	0.19

FERTILITY	
Calving Interval	Survival
-10.02	3.71%

CALVING		
Gestation	Dairy Cow	Dairy Heifer
-4.61 (60% Rel.)	1.63 (61% Rel.)	3.82 (58% Rel.)

High EBI Genomic

FR7752 OLCASTLETOWN CASPER

International ID

HOLIRLM218577582331

aAa: 243

PED

FR
16%

R. Drake, Kildorrery, Co. Cork



Olcastletown Brandy Celestine GP80 - Dam



DAM - 305 Day Milk Records

Lact.	Calved	Calv. Int	Milk Kg	Fat Kg	Pro Kg	Fat %	Pro %	Kg's Solids
1	01/02/2021	N/A	4638	219	177	4.72	3.82	396

FR5860 X FR2314 X RUU

- Highest EBI Frank Joseph Son
- €107 Milk Sub Index
- €164 Fertility Sub Index
- 81kg of Milk with an Impressive 32kg of Solids

EBI	JAN. 22	SOURCE	ICBF	REL
342	52%			
107	70%			
164	37%			
60	55%			
-6	39%			
7	38%			
1	55%			
10	62%			



PRODUCTION

Milk Kg	Fat Kg	Protein Kg	Solid Kg	Fat %	Prot %
81	19	13	32	0.27	0.17

FERTILITY

Calving Interval	Survival
-9.85	3.19%

CALVING

Gestation	Dairy Cow	Dairy Heifer
-5.14	1.49	3.71
(60% Rel.)	(63% Rel.)	(59% Rel.)

FR7746 FOYFIN TOMMY SRM

International ID

HOLIRLM214696463181

aAa: 156

SRM

FR
31%

T. J. Sproule, Castlefin, Co. Donegal



Foyfin Tommy Dam



DAM - 305 Day Milk Records

Lact.	Calved	Calv. Int	Milk Kg	Fat Kg	Pro Kg	Fat %	Pro %	Kg's Solids
2	14/02/2021	356	8217	344	304	4.19	3.70	648
Avg	2	356	7652	319	282	4.16	3.68	600

FR5860 X FR2239 X YAD

- Outstanding Production (39kg Milk Solids)
- Fertility Improver at €153
- Outstanding Dam and Granddam
- Strength Improver (aAa: 156)

EBI	JAN. 22	SOURCE	ICBF	REL
334	52%			
123	72%			
153	36%			
49	54%			
-15	39%			
10	38%			
5	54%			
9	60%			



PRODUCTION

Milk Kg	Fat Kg	Protein Kg	Solid Kg	Fat %	Prot %
295	21	18	39	0.15	0.13

FERTILITY

Calving Interval	Survival
-9.10	3.07%

CALVING

Gestation	Dairy Cow	Dairy Heifer
-4.51	2.09	4.61
(59% Rel.)	(63% Rel.)	(54% Rel.)

FR7038 DUNGORMAN EDDIE SRM

International ID

HOLIRLM224772662336

aAa: 156

SRM 28%

P. Carlin, Lifford, Co. Donegal



DoveaGENETICS

Dungorman Edel 1992 - Dam



DAM - 305 Day Milk Records								
Lact.	Calved	Calv. Int	Milk Kg	Fat Kg	Pro Kg	Fat %	Pro %	Kg's Solids
2	25/02/2020	329	6167	276	236	4.47	3.82	512
Avg	3	349	6235	273	236	4.68	3.79	510

FR4726 X LWR X PGF

- Unique EBI Blend
- Milk Sub Index €127
- Fertility Sub Index €165
- Cow Line with Exceptional Longevity

EBI JAN. 22	SOURCE	ICBF	REL
353			54%
Prod. SI	127		73%
Fert. SI	165		39%
Calv. SI	54		56%
Beef. SI	-10		45%
Maint. SI	9		40%
Mgmt. SI	1		59%
Health SI	7		65%

PRODUCTION					
Milk Kg	Fat Kg	Protein Kg	Solid Kg	Fat %	Prot %
323	22	19	41	0.16	0.13

FERTILITY	
Calving Interval	Survival
-9.71	3.40%

CALVING		
Gestation	Dairy Cow	Dairy Heifer
-5.18 (60% Rel.)	1.87 (65% Rel.)	3.93 (57% Rel.)

FR6625 DOLLSTURN JIMBOB SRM

International ID

HOLIRLM218484161192

aAa: 432

SRM 31%

P. J. Howlin, New Ross, Co Wexford



DoveaGENETICS

Dollsturn Sally 750 - Dam



DAM - 305 Day Milk Records								
Lact.	Calved	Calv. Int	Milk Kg	Fat Kg	Pro Kg	Fat %	Pro %	Kg's Solids
4	20/02/2020	356	6846	326	285	4.76	4.16	611
Avg	5	368	5702	267	231	4.67	4.03	498

FR4439 X ZBA X RMW

- Outstanding Grazing Qualities
- Maintenance Leader at €29
- Extreme Maintenance / Production Efficiency
- Increased EBI in 2022
- 4% Protein Dam

EBI JAN. 22	SOURCE	ICBF	REL
338			57%
Prod. SI	89		77%
Fert. SI	189		43%
Calv. SI	50		54%
Beef. SI	-31		46%
Maint. SI	29		45%
Mgmt. SI	-5		57%
Health SI	17		61%

PRODUCTION					
Milk Kg	Fat Kg	Protein Kg	Solid Kg	Fat %	Prot %
-42	16	9	25	0.31	0.18

FERTILITY	
Calving Interval	Survival
-10.85	4.23%

CALVING		
Gestation	Dairy Cow	Dairy Heifer
-3.84 (60% Rel.)	1.98 (62% Rel.)	5.18 (53% Rel.)

High EBI Genomic

FR6469 TINNAKILL NAVIGATOR

International ID

HOLIRLM216059731955

aAa: 162

PED 25% FR

T. Fennelly, Portarlington, Co. Laois



DoveaGENETICS

Tinnakill LHZ Nicole 882 - Dam



DAM - 305 Day Milk Records								
Lact.	Calved	Calv. Int	Milk Kg	Fat Kg	Pro Kg	Fat %	Pro %	Kg's Solids
4	10/03/2018	333	7122	333	278	4.67	3.90	611
Avg	7	365	6223	307	249	4.92	4.01	556

FR4482 X LHZ X KOZ

- The Pedigree Fertility Leader at €193
- Health & Component Improver
- Exceptional Dam with Extreme Longevity
- 4% Protein Dam

EBI	JAN. 22	SOURCE	ICBF	REL
334				59%
Prod. SI	81			79%
Fert. SI	193			46%
Calv. SI	41			57%
Beef. SI	-12			46%
Maint. SI	17			45%
Mgmt. SI	0			61%
Health SI	15			66%



PRODUCTION					
Milk Kg	Fat Kg	Protein Kg	Solid Kg	Fat %	Prot %
-32	14	8	22	0.27	0.17

FERTILITY	
Calving Interval	Survival
-10.65	4.71%

CALVING		
Gestation	Dairy Cow	Dairy Heifer
-3.48 (61% Rel.)	2.75 (66% Rel.)	5.61 (57% Rel.)

FR6520 TOUREEN TUAIRIN TIM

International ID

HOLIRLM212744542040

aAa: 345

PED 13% FR

M. Dorgan, Mallow, Co. Cork



DoveaGENETICS

Toureen Zoe 3 VG85 - Dam



DAM - 305 Day Milk Records								
Lact.	Calved	Calv. Int	Milk Kg	Fat Kg	Pro Kg	Fat %	Pro %	Kg's Solids
4	18/02/2021	372	6749	324	264	4.80	3.91	588
Avg	4	366	5968	286	229	4.82	3.82	515

FR5133 X LHZ X GIO

- The Pedigree Percentage Leader
- +0.33% Butter Fat
- +0.20% Protein
- Outstanding Daughter Fertility

EBI	JAN. 22	SOURCE	ICBF	REL
335				54%
Prod. SI	80			74%
Fert. SI	198			39%
Calv. SI	43			56%
Beef. SI	-11			42%
Maint. SI	15			39%
Mgmt. SI	3			59%
Health SI	7			64%



PRODUCTION					
Milk Kg	Fat Kg	Protein Kg	Solid Kg	Fat %	Prot %
-126	13	7	20	0.33	0.20

FERTILITY	
Calving Interval	Survival
-11.86	3.88%

CALVING		
Gestation	Dairy Cow	Dairy Heifer
-4.52 (60% Rel.)	2.48 (65% Rel.)	6.44 (55% Rel.)

High EBI Genomic

FR7686 ROSSEN PADDY SRM

International ID

HOLIRLM214137242097

aAa: 423

SRM 19%

J.Barron, Rossenany, Windgap, Co Kilkenny



DoveaGENETICS

Rossen Paddy Srm Dam & GDam



DAM - 305 Day Milk Records								
Lact.	Calved	Calv. Int	Milk Kg	Fat Kg	Pro Kg	Fat %	Pro %	Kg's Solids
1	29/01/2021	N/A	5141	239	197	4.64	3.84	436

FR4728 X FR4244 X GZY

- €339 EBI
- Fertility & Health with 35kg of Solids
- Bred for Longevity
- 3 Generations Milking on Farm
- Limited Semen Availability Spring 2022

EBI	JAN. 22	SOURCE	ICBF	REL
339				52%
Prod. SI	110			70%
Fert. SI	154			36%
Calv. SI	58			55%
Beef. SI	-14			44%
Maint. SI	16			39%
Mgmt. SI	3			55%
Health SI	12			61%



PRODUCTION					
Milk Kg	Fat Kg	Protein Kg	Solid Kg	Fat %	Prot %
234	19	16	35	0.16	0.13

FERTILITY	
Calving Interval	Survival
-8.61	3.68%

CALVING		
Gestation	Dairy Cow	Dairy Heifer
-4.67 (60%Rel.)	2.02 (63% Rel.)	4.91 (61% Rel.)

FR7782 JEANJO ACER SRM

International ID

HOLIRLM213002387056

aAa: 234

SRM 22%

D. Roulston, St. Johnstown, Co. Donegal



DoveaGENETICS

Jeanjo Royalty Etta - Dam



DAM - 305 Day Milk Records								
Lact.	Calved	Calv. Int	Milk Kg	Fat Kg	Pro Kg	Fat %	Pro %	Kg's Solids
2	19/02/2021		388	7262	295	265	4.07	3.65
Avg	2		388	6100	249	225	4.08	3.70

FR5860 X FR4123 X IE161260281774

- New Graduate from the Jeanjo Herd
- Massive Health Sub Index at €17
- Use For High Solids
- Easy Managed Cows
- Limited Semen Availability Spring 2022



EBI	JAN. 22	SOURCE	ICBF	REL
320				51%
Prod. SI	109			71%
Fert. SI	157			34%
Calv. SI	46			53%
Beef. SI	-16			39%
Maint. SI	6			37%
Mgmt. SI	2			53%
Health SI	17			59%

PRODUCTION					
Milk Kg	Fat Kg	Protein Kg	Solid Kg	Fat %	Prot %
106	18	14	32	0.23	0.18

FERTILITY	
Calving Interval	Survival
-9.33	3.17%

CALVING		
Gestation	Dairy Cow	Dairy Heifer
-3.65 (60%Rel.)	2.05 (60% Rel.)	3.83 (52% Rel.)

High EBI Genomic

FR7683 HIGHPARK AARON SRM

International ID

HOLIRLM226050371250

aAa: 243

SRM

FR
22%

D.Young, Kiltegan, Co Wicklow



DoveaGENETICS

Highpark Aron 667 - Dam



DAM - 305 Day Milk Records								
Lact.	Calved	Calv. Int	Milk Kg	Fat Kg	Pro Kg	Fat %	Pro %	Kg's Solids
1	04/03/2020	N/A	5398	233	222	4.31	4.11	455
AvG	2	346	6513	273	261	4.20	4.01	533

FR4728 X IE221060281108 X NPY

- **Balanced EBI**
- **Volume with Percentages**
- **Moderate Sized Cows**
- **Exceptional Dam with 4% Protein**
- **Limited Semen Availability Spring 2022**

EBI	JAN. 22	SOURCE	ICBF	REL
330	50%			
Prod. SI	118	71%		
Fert. SI	150	33%		
Calv. SI	46	47%		
Beef. SI	-10	43%		
Maint. SI	15	37%		
Mgmt. SI	4	55%		
Health SI	7	58%		



PRODUCTION					
Milk Kg	Fat Kg	Protein Kg	Solid Kg	Fat %	Prot %
199	19	16	35	0.19	0.16

FERTILITY	
Calving Interval	Survival
-8.64	3.32%

CALVING		
Gestation	Dairy Cow	Dairy Heifer
-3.59 (46%Rel.)	2.37 (59% Rel.)	5.36 (54% Rel.)

FR7749 BALLINTOSIG MISTER MAN

International ID

HOLIRLM224189510985

aAa: 243

PED

FR
25%

A. Flavin, Killeagh, Co. Cork



DoveaGENETICS

Ballintosig FR4021 Amber 909 - Dam



DAM - 305 Day Milk Records								
Lact.	Calved	Calv. Int	Milk Kg	Fat Kg	Pro Kg	Fat %	Pro %	Kg's Solids
1	10/02/2021	N/A	5954	271	241	4.55	4.06	512

FR4785 X FR4021 X LWR

- **The Breed Leader for Protein +0.22%**
- **Fat +0.29%**
- **Milk Sub Index €134**
- **4% Protein Cow**
- **Limited Semen Availability Spring 2022**

EBI	JAN. 22	SOURCE	ICBF	REL
332	51%			
Prod. SI	134	67%		
Fert. SI	122	36%		
Calv. SI	50	56%		
Beef. SI	-2	44%		
Maint. SI	12	39%		
Mgmt. SI	2	57%		
Health SI	14	63%		



PRODUCTION					
Milk Kg	Fat Kg	Protein Kg	Solid Kg	Fat %	Prot %
120	22	17	39	0.29	0.22

FERTILITY	
Calving Interval	Survival
-6.98	2.76%

CALVING		
Gestation	Dairy Cow	Dairy Heifer
-3.81 (60%Rel.)	1.99 (63% Rel.)	3.72 (61% Rel.)

FR7767 GLENABOY SPECIAL ONE

International ID

HOLIRLM223088231514

aAa: 234

PED 19%

K. O'Donoghue, Tallow, Co. Waterford



DoveaGENETICS

Glenaboy HDJ Daisy EX90 - Dam



DAM - 305 Day Milk Records								
Lact.	Calved	Calv. Int	Milk Kg	Fat Kg	Pro Kg	Fat %	Pro %	Kg's Solids
3	20/01/2019	357	8256	433	362	5.24	4.39	795
Avg	5	367	8174	424	346	5.26	4.25	770

FR5704 X HDJ X HMY

- From the Same Dam as Glenaboy Ronald (FR4785)
- Outstanding Percentages at +0.34% Fat & +0.20% Protein
- Fertility €115
- The Perfect Pedigree
- Dam won IHFA EBI Cow of the Year 2021
- Limited Semen Availability Spring 2022

EBI	JAN. 22	SOURCE	ICBF	REL
EBI	310	65%		
Prod. SI	123	80%		
Fert. SI	115	47%		
Calv. SI	54	89%		
Beef. SI	-5	67%		
Maint. SI	7	51%		
Mgmt. SI	2	57%		
Health SI	14	69%		



PRODUCTION					
Milk Kg	Fat Kg	Protein Kg	Solid Kg	Fat %	Prot %
70	22	14	36	0.34	0.20

FERTILITY	
Calving Interval	Survival
-6.08	3.06%

CALVING		
Gestation	Dairy Cow	Dairy Heifer
-4.95 (61% Rel.)	2.16 (66% Rel.)	5.58 (58% Rel.)

FR7071 TULLERSTOWN PODGE

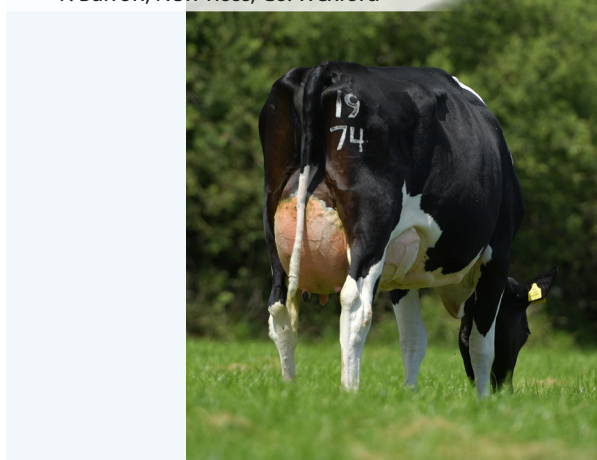
International ID

HOLIRLM212219632314

aAa: 342

PED 13%

P. Barron, New Ross, Co. Wexford



DoveaGENETICS

Tullerstown FR2214 Audrey - Dam



DAM - 305 Day Milk Records								
Lact.	Calved	Calv. Int	Milk Kg	Fat Kg	Pro Kg	Fat %	Pro %	Kg's Solids
3	28/01/2021	364	7964	439	299	5.51	3.75	738
Avg	3	360	7370	371	266	5.01	3.61	637

FR4728 X FR2314 X DZM

- Great All-Round Sire
- 37kg of Milk Solids
- €112 Milk Sub Index
- €139 Fertility Sub Index



EBI	JAN. 22	SOURCE	ICBF	REL
EBI	306	53%		
Prod. SI	112	73%		
Fert. SI	139	37%		
Calv. SI	41	55%		
Beef. SI	-4	45%		
Maint. SI	7	40%		
Mgmt. SI	0	56%		
Health SI	12	62%		

PRODUCTION					
Milk Kg	Fat Kg	Protein Kg	Solid Kg	Fat %	Prot %
214	23	14	37	0.25	0.12

FERTILITY	
Calving Interval	Survival
-7.54	3.52%

CALVING		
Gestation	Dairy Cow	Dairy Heifer
-3.91 (60% Rel.)	2.62 (63% Rel.)	6.60 (56% Rel.)

High EBI Genomic

FR6718 GARREDDENNY LEWIS SRM

International ID

HOLIRLM214003452892

aAa: 342

SRM 22%

B. James, Crettyard, Co. Carlow



DoveaGENETICS

Garrendenny TYH Lucy 2191 - Sister



DAM - 305 Day Milk Records								
Lact.	Calved	Calv. Int	Milk Kg	Fat Kg	Pro Kg	Fat %	Pro %	Kg's Solids
11	07/02/2017	365	8179	364	311	4.45	3.80	675
Avg	15	367	7015	300	262	4.28	3.73	562

FR4513 X SSI

- Fertility Specialist at €202
- Dam Produced 100,000kg of Milk at 3.71% Protein
- Bred for Longevity
- Dam Currently on 15 Lactations

EBI	JAN. 22	SOURCE	ICBF	REL
309				58%
Prod. SI	77			78%
Fert. SI	202			43%
Calv. SI	23			51%
Beef. SI	-11			48%
Maint. SI	10			48%
Mgmt. SI	1			59%
Health SI	6			63%



PRODUCTION					
Milk Kg	Fat Kg	Protein Kg	Solid Kg	Fat %	Prot %
-106	14	7	21	0.32	0.18

FERTILITY	
Calving Interval	Survival
-14.62	1.45%

CALVING		
Gestation	Dairy Cow	Dairy Heifer
-2.33 (49% Rel.)	2.86 (63% Rel.)	7.77 (54% Rel.)

FR6628 CULLOHILL SAMIR SRM

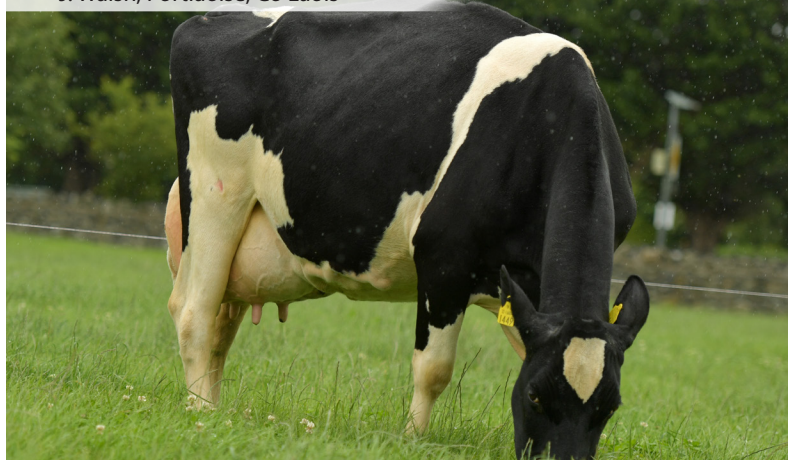
International ID

HOLIRLM216824212318

aAa: 156

SRM 25%

J. Walsh, Portlaoise, Co Laois



DoveaGENETICS

Cullohill Harry Viola 1727 - Dam



DAM - 305 Day Milk Records								
Lact.	Calved	Calv. Int	Milk Kg	Fat Kg	Pro Kg	Fat %	Pro %	Kg's Solids
3	03/02/2020	353	6033	339	239	5.63	3.96	578
Avg	4	368	5157	578	206	5.39	3.99	484

FR4439 X FR2032 X UPH

- Super Grazing Sire
- Efficient Maintenance / Production Ratio
- Low Body Size
- 5.4% Fat & 4% Protein Dam

EBI	JAN. 22	SOURCE	ICBF	REL
309				59%
Prod. SI	99			78%
Fert. SI	149			45%
Calv. SI	55			56%
Beef. SI	-26			46%
Maint. SI	23			49%
Mgmt. SI	-5			59%
Health SI	13			65%



PRODUCTION					
Milk Kg	Fat Kg	Protein Kg	Solid Kg	Fat %	Prot %
-128	22	7	29	0.48	0.21

FERTILITY	
Calving Interval	Survival
-8.14	3.78%

CALVING		
Gestation	Dairy Cow	Dairy Heifer
-4.48 (61% Rel.)	1.55 (64% Rel.)	4.46 (56% Rel.)

High EBI Genomic

FR6616 DROUMNACARA LILY DYLAN SRM

International ID

HOLIRLM223628130874

aAa: 342

SRM 19%

J. F. Keating, Skibbereen, Co. Cork



DoveaGENETICS

Droumnacara Lily 3 - Dam



DAM - 305 Day Milk Records

Lact.	Calved	Calv. Int	Milk Kg	Fat Kg	Pro Kg	Fat %	Pro %	Kg's Solids
2	23/02/2020	369	6305	317	266	5.02	4.22	583
Avg	3	370	5796	301	243	5.18	4.19	544

FR4914 X FR2053 X PKK

- Super Grazing Sire
- Milk Production with Percentages
- All-Round Bull
- 4.15% Protein Dam

EBI	JAN. 22	SOURCE	ICBF	REL
305				52%
Prod. SI	112			72%
Fert. SI	133			36%
Calv. SI	56			55%
Beef. SI	-11			42%
Maint. SI	12			39%
Mgmt. SI	2			55%
Health SI	0			61%



PRODUCTION

Milk Kg	Fat Kg	Protein Kg	Solid Kg	Fat %	Prot %
142	21	14	35	0.26	0.16

FERTILITY

Calving Interval	Survival
-8.23	2.35%

CALVING

Gestation	Dairy Cow	Dairy Heifer
-4.68	1.68	5.13
(60% Rel.)	(63% Rel.)	(54% Rel.)

FR6535 CLOONACUSHA TIM SRM

International ID

HOLIRLM213084462365

aAa: 243

SRM 22%

M. Quinn, Ballinasloe, Co. Galway



DoveaGENETICS

Cloonacusha Art Debbie - Dam



DAM - 305 Day Milk Records

Lact.	Calved	Calv. Int	Milk Kg	Fat Kg	Pro Kg	Fat %	Pro %	Kg's Solids
2	07/02/2021	364	5953	269	226	4.52	3.79	495
Avg	2	364	5771	219	475	4.45	3.79	475

FR4397 X FR2249 X GXY

- Balanced EBI of €303
- +0.18% Fat & +0.19% Protein
- Great Fertility
- Interesting Breeding

EBI	JAN. 22	SOURCE	ICBF	REL
303				65%
Prod. SI	104			80%
Fert. SI	148			47%
Calv. SI	42			89%
Beef. SI	-3			67%
Maint. SI	5			51%
Mgmt. SI	2			57%
Health SI	5			69%



PRODUCTION

Milk Kg	Fat Kg	Protein Kg	Solid Kg	Fat %	Prot %
88	14	14	28	0.18	0.19

FERTILITY

Calving Interval	Survival
-8.86	2.95%

CALVING

Gestation	Dairy Cow	Dairy Heifer
-3.64	2.23	6.70
(59% Rel.)	(61% Rel.)	(59% Rel.)

FR6475 GORTCREEN VAN DIJK

International ID

HOLIRLM213832812920

aAa: 243

PED 19%
FR

D. Broderick, Listowel Co. Kerry



DoveaGENETICS

Gortcreen Lucy 2385 - Dam



DAM - 305 Day Milk Records								
Lact.	Calved	Calv. Int	Milk Kg	Fat Kg	Pro Kg	Fat %	Pro %	Kg's Solids
1	13/02/2019	N/A	6885	309	272	4.49	3.95	581
Avg	3	387	7653	341	295	4.45	3.85	635

FR4513 X FR2314 X HVA

- Fat & Protein % Leader
- 32kg of Solids with 44kg of Milk
- Superb, Square Dam
- Positive Rump and Chest Width

EBI	JAN. 22	SOURCE	ICBF	REL
311				59%
Prod. SI	107			78%
Fert. SI	134			45%
Calv. SI	48			57%
Beef. SI	-4			46%
Maint. SI	3			45%
Mgmt. SI	12			59%
Health SI	11			66%



PRODUCTION					
Milk Kg	Fat Kg	Protein Kg	Solid Kg	Fat %	Prot %
44	20	12	32	0.32	0.18

FERTILITY	
Calving Interval	Survival
-7.91	2.75%

CALVING		
Gestation	Dairy Cow	Dairy Heifer
-4.15 (60% Rel.)	2.21 (66% Rel.)	5.39 (58% Rel.)

FR6523 BROWNEY LISNA

International ID

HOLIRLM215094072193

aAa: 435

PED 25%
FR

T. J. Kearney, Rathcormac, Co. Cork



DoveaGENETICS

Browney LWR Margaret 1534 VG85 - Dam



DAM - 305 Day Milk Records								
Lact.	Calved	Calv. Int	Milk Kg	Fat Kg	Pro Kg	Fat %	Pro %	Kg's Solids
4	18/01/2021	350	8287	399	312	4.81	3.76	711
Avg	4	364	6692	308	249	4.58	3.71	557

FR4513 X LWR X LHZ

- Nice Blend of Milk Kgs & Components
- Super Milk Sub Index €122
- 37kg of Milk Solids
- Dam's Calving Interval is 364 days

EBI	JAN. 22	SOURCE	ICBF	REL
305				65%
Prod. SI	122			80%
Fert. SI	120			47%
Calv. SI	49			89%
Beef. SI	-6			67%
Maint. SI	4			51%
Mgmt. SI	1			57%
Health SI	14			69%



PRODUCTION					
Milk Kg	Fat Kg	Protein Kg	Solid Kg	Fat %	Prot %
107	23	14	37	0.32	0.18

FERTILITY	
Calving Interval	Survival
-6.27	3.30%

CALVING		
Gestation	Dairy Cow	Dairy Heifer
-4.69 (61% Rel.)	2.03 (65% Rel.)	5.97 (58% Rel.)

High EBI Genomic

FR6631 BALLYKINASH SAMUEL

International ID

HOLIRLM224045851997

aAa: 243

PED

FR
22%

J. Delahunty, Birr, Co. Tipperary



DoveaGENETICS

Ballykinash FR2314 Sue 1726 - Dam



DAM - 305 Day Milk Records

Lact.	Calved	Calv. Int	Milk Kg	Fat Kg	Pro Kg	Fat %	Pro %	Kg's Solids
2	29/01/2021	368	5975	292	231	4.88	3.86	523
Avg	2	368	5877	291	225	4.95	3.78	516

FR4785 X FR2314 X BHZ

- Huge Fat Components +0.31%
- Fertility, Maintenance & 31kg Solids
- Impressive Sire Stack
- Grazing Sire

EBI	JAN. 22	SOURCE	ICBF	REL
295	53%			
Prod. SI	198	69%		
Fert. SI	140	37%		
Calv. SI	40	56%		
Beef. SI	-5	44%		
Maint. SI	14	43%		
Mgmt. SI	-2	59%		
Health SI	10	65%		



PRODUCTION

Milk Kg	Fat Kg	Protein Kg	Solid Kg	Fat %	Prot %
74	21	10	31	0.31	0.14

FERTILITY

Calving Interval	Survival
-8.32	2.84%

CALVING

Gestation	Dairy Cow	Dairy Heifer
-2.90	1.95	4.60
(60% Rel.)	(65% Rel.)	(62% Rel.)

FR7080 DERRINSALLOW NEYMAR

International ID

HOLIRLM219772071952

aAa: 432

PED

FR
19%

J. Murray, Birr, Co. Offaly



DoveaGENETICS

Derrinsallow Agnes 736 GP81 - Dam



DAM - 305 Day Milk Records

Lact.	Calved	Calv. Int	Milk Kg	Fat Kg	Pro Kg	Fat %	Pro %	Kg's Solids
1	21/02/2020	N/A	6939	287	264	4.14	3.81	551
Avg	2	405	7393	303	280	4.10	3.79	582

FR4785 X FR2249 X HZB

- Balanced Production & Fertility Figures
- 36kg Milk Solids
- 3 Generations Milking on Farm
- Positive Chest, Rump
- Snug Udders



EBI	JAN. 22	SOURCE	ICBF	REL
305	65%			
Prod. SI	116	80%		
Fert. SI	132	47%		
Calv. SI	48	89%		
Beef. SI	-9	67%		
Maint. SI	1	51%		
Mgmt. SI	5	57%		
Health SI	11	69%		

PRODUCTION

Milk Kg	Fat Kg	Protein Kg	Solid Kg	Fat %	Prot %
220	20	16	36	0.20	0.14

FERTILITY

Calving Interval	Survival
-7.21	3.32%

CALVING

Gestation	Dairy Cow	Dairy Heifer
-3.64	1.74	3.79
(60% Rel.)	(64% Rel.)	(57% Rel.)

High EBI Genomic

FR5848 RIVERSIDE HAROLD SRM

International ID

HOLIRLM224041591689

aAa: 345

SRM 25%

J. McInerney, Newmarket On Fergus, Co. Clare



DoveaGENETICS

Riverside HDJ Marg 1312 VG88 - Dam



DAM - 305 Day Milk Records								
Lact.	Calved	Calv. Int	Milk Kg	Fat Kg	Pro Kg	Fat %	Pro %	Kg's Solids
3	04/02/2019	N/A	8671	392	382	4.52	4.41	774
Avg	3	377	9201	418	396	4.54	4.31	814

FR2298 X HDJ X IE341331031319

- Outstanding Protein Sire at +0.24%
- Long Lasting, Grazing Cows
- 4.25% Protein VG88 Dam
- Low Stature and Adds Strength

EBI	JAN. 22	SOURCE	ICBF	REL
296	64%			
Prod. SI	106	77%		
Fert. SI	145	49%		
Calv. SI	36	88%		
Beef. SI	-4	54%		
Maint. SI	7	48%		
Mgmt. SI	6	60%		
Health SI	0	68%		



PRODUCTION					
Milk Kg	Fat Kg	Protein Kg	Solid Kg	Fat %	Prot %
-36	13	13	26	0.26	0.24

FERTILITY	
Calving Interval	Survival
-8.85	2.74%

CALVING		
Gestation	Dairy Cow	Dairy Heifer
-3.29 (99% Rel.)	2.35 (96% Rel.)	5.89 (87% Rel.)

FR5857 OLCASTLETOWN TIERNAN

International ID

HOLIRLM218577571984

aAa: 234

PED 19%

R. Drake, Kildorrery, Co.Cork



DoveaGENETICS

Olcastletown Yvonne Ronaldo EX91 - Dam



DAM - 305 Day Milk Records								
Lact.	Calved	Calv. Int	Milk Kg	Fat Kg	Pro Kg	Fat %	Pro %	Kg's Solids
8	03/02/2021	361	8921	369	327	4.13	3.67	696
Avg	8	364	8599	333	314	3.88	3.66	647

FR2314 X HZO X OJI

- High Output Bull with No Faults
- Fertility, Health & 39Kg of Solids
- Exceptional Long Lasting Productive Dam
- Available Sexed Ultra 4M



EBI	JAN. 22	SOURCE	ICBF	REL
281	65%			
Prod. SI	122	80%		
Fert. SI	125	47%		
Calv. SI	17	89%		
Beef. SI	-6	67%		
Maint. SI	8	51%		
Mgmt. SI	-1	57%		
Health SI	15	69%		

PRODUCTION					
Milk Kg	Fat Kg	Protein Kg	Solid Kg	Fat %	Prot %
233	23	16	39	0.23	0.14

FERTILITY	
Calving Interval	Survival
-7.13	2.84%

CALVING		
Gestation	Dairy Cow	Dairy Heifer
-2.23 (99% Rel.)	3.00 (95% Rel.)	7.23 (80% Rel.)

High EBI Genomic

FR6880 MEANDER ALADIESMAN

International ID
HOLNZLM000000120600

aAa: N/A

SRM FR 25%



Rhincrue BGJ Tilly- Paternal Sister



DAM - 305 Day Milk Records								
Lact.	Calved	Calv. Int	Milk Kg	Fat Kg	Pro Kg	Fat %	Pro %	Kg's Solids
2	28/01/2020	350	7838	365	294	4.66	3.75	659
Avg	2	350	7031	313	262	4.43	3.72	575

EBI JAN. 22 SOURCE ICBF		REL
EBI	275	59%
Prod. SI	102	75%
Fert. SI	109	51%
Calv. SI	56	52%
Beef. SI	-23	46%
Maint. SI	16	46%
Mgmt. SI	8	62%
Health SI	7	69%

PRODUCTION					
Milk Kg	Fat Kg	Protein Kg	Solid Kg	Fat %	Prot %
157	19	13	32	0.21	0.13

FERTILITY		CALVING		
Calving Interval	Survival	Gestation	Dairy Cow	Dairy Heifer
-5.95	2.78%	-5.28 (46%Rel.)	1.43 (66%Rel.)	4.43 (56%Rel.)

- New Zealand Friesian Sire
- Easy Calving, Grazing Sire
- EBI Increasing at Every Evaluation



FR4788 SCORDUFF NEART

International ID
HOLIRLM225474673278

aAa: 243

PED FR 13%

M. Gowing, Roscrea, Co. Tipperary



Scorduff Neart FR4788



DAM - 305 Day Milk Records								
Lact.	Calved	Calv. Int	Milk Kg	Fat Kg	Pro Kg	Fat %	Pro %	Kg's Solids
3	13/01/2018	366	7562	396	287	5.24	3.79	683
Avg	6	366	6890	342	253	4.93	3.68	595

EBI JAN. 22 SOURCE ICBF		REL
EBI	272	67%
Prod. SI	106	79%
Fert. SI	117	50%
Calv. SI	33	90%
Beef. SI	-12	75%
Maint. SI	12	53%
Mgmt. SI	-2	60%
Health SI	18	68%

PRODUCTION					
Milk Kg	Fat Kg	Protein Kg	Solid Kg	Fat %	Prot %
21	20	11	31	0.33	0.19

FERTILITY		CALVING		
Calving Interval	Survival	Gestation	Dairy Cow	Dairy Heifer
-5.84	3.48%	-2.54 (99%Rel.)	2.41 (99%Rel.)	5.77 (90%Rel.)

- Massive Health Sub-Index
- 31kg of Solids with Tremendous Fats and 21kg of Milk
- Heifers Beginning to Calve



FR6829 SCARTFLESK JOHN

International ID
HOLIRLM222276612095

aAa: 243

PED FR 28%

J. Ahern, Watergrasshill, Co. Cork



Sister to Dam- Cullohill Harry Viola



DAM - 305 Day Milk Records								
Lact.	Calved	Calv. Int	Milk Kg	Fat Kg	Pro Kg	Fat %	Pro %	Kg's Solids
3	07/01/2019	343	8305	347	302	4.17	3.64	649
Avg	5	379	8165	335	288	4.08	3.53	623

EBI JAN. 22 SOURCE ICBF		REL
EBI	292	59%
Prod. SI	111	79%
Fert. SI	113	46%
Calv. SI	48	52%
Beef. SI	-7	46%
Maint. SI	9	45%
Mgmt. SI	9	62%
Health SI	10	68%

PRODUCTION					
Milk Kg	Fat Kg	Protein Kg	Solid Kg	Fat %	Prot %
183	21	14	35	0.24	0.13

FERTILITY		CALVING		
Calving Interval	Survival	Gestation	Dairy Cow	Dairy Heifer
-6.22	2.82%	-4.90 (49%Rel.)	2.53 (66%Rel.)	6.29 (58%Rel.)

- Production Specialist
- 35kg of Solids
- Milk with Percentages



Young High EBI Genomic

JEANJO ART

FR4428

International ID

HOLIRLM213002344883

aAa: 243



D. Roulston, St. Johnstown, Co. Donegal

Jeanjo Art Daughter



Jeanjo Art Daughters



DAM - 305 Day Milk Records								
Lact.	Calved	Calv. Int	Milk Kg	Fat Kg	Pro Kg	Fat %	Pro %	Kg's Solids
4	26/02/2017	350	6025	246	223	4.08	3.70	469
Avg	6	367	5357	231	202	4.33	3.78	433

Daughter - 305 Day Milk Records								
Daughters Herds	Parity	Milk Kg	Fat Kg	Pro Kg	Fat %	Pro %	Kg's Solids	
312	126	1	5274	242	198	4.59	3.75	440

FR2249 X BGZ X KLA

- Exciting New Daughter Proven Bull
- Ireland's No.1 Daughter Proven Component Sire
- 35kg of Milk Solids
- Milking Daughters Confirm his Solids, 4.59% Fat & 3.75% Protein
- Excellent Daughter Fertility for Grazing Systems
- Medium Sized Cows (Maintenance €12)

EBI	JAN. 22	SOURCE	ICBF	REL
EBI	259			86%
Prod. SI	117			98%
Fert. SI	97			72%
Calv. SI	46			91%
Beef. SI	-19			94%
Maint. SI	12			85%
Mgmt. SI	3			74%
Health SI	4			81%

PRODUCTION					
Milk Kg	Fat Kg	Protein Kg	Solid Kg	Fat %	Prot %
97	21	14	35	0.29	0.19



FERTILITY	
Calving Interval	Survival
-5.00	2.70%

CALVING		
Gestation	Dairy Cow	Dairy Heifer
-3.92 (99%Rel.)	2.13 (99% Rel.)	5.76 (99% Rel.)

Daughter Proven

FJM DOONMANAGH HMY MOSSY

International ID

HOLIRLM191903370822

aAa: 243



J. Galvin, Lisle, Co. Kerry



Doonmanagh HMY Mossy Daughters



Daughter - 305 Day Milk Records

Daughters Herds	Parity	Milk Kg	Fat Kg	Pro Kg	Fat %	Pro %	Kg Solids	
2693	741	1	5434	242	198	4.45	3.64	440
1635	528	2	6548	286	241	4.37	3.68	527
1144	422	3	6931	303	255	4.37	3.68	558
613	273	4	7126	315	261	4.42	3.66	576
126	75	5	7168	311	261	4.34	3.64	572

HYM X LFM X AXA

- Delivering Milk Kg and High Components
- Butterfat Transmitter +0.29% Fat
- Balanced EBI with 6000 Daughters Milking
- Farmer Favourite

EBI	JAN. 22	SOURCE	ICBF	REL
204	96%			
Prod. SI	82	99%		
Fert. SI	58	93%		
Calv. SI	51	98%		
Beef. SI	-6	99%		
Maint. SI	11	98%		
Mgmt. SI	3	82%		
Health SI	6	95%		

PRODUCTION

Milk Kg	Fat Kg	Protein Kg	Solid Kg	Fat %	Prot %
23	17	8	25	0.29	0.13

FERTILITY

Calving Interval	Survival
-3.17	1.42%

CALVING

Gestation	Dairy Cow	Dairy Heifer
-5.14	2.26	5.67
(99% Rel.)	(99% Rel.)	(99% Rel.)

FR2232 CLOCHRUA RANDY LEVI

International ID

HOLIRLM141894371549

aAa: 324



D. O'Leary, Upper Cloghroe, Co. Cork



Clochrua Randy Levi Daughters



Daughter - 305 Day Milk Records

Daughters Herds	Parity	Milk Kg	Fat Kg	Pro Kg	Fat %	Pro %	Kg Solids	
1444	499	1	5872	250	212	4.26	3.61	462
1051	410	2	6891	290	252	4.21	3.66	542
444	220	3	7220	308	265	4.27	3.67	573

YRY X RUU X GMI

- High EBI Daughter Proven Classic
- Ideal Grazing Bull
- Consistent Daughters with Medium Size (Maintenance €21)
- Increased Performance at Each Lactation
- Suitable for Heifers

EBI	JAN. 22	SOURCE	ICBF	REL
232	94%			
Prod. SI	96	99%		
Fert. SI	72	89%		
Calv. SI	54	97%		
Beef. SI	-19	99%		
Maint. SI	21	97%		
Mgmt. SI	4	80%		
Health SI	4	93%		

PRODUCTION

Milk Kg	Fat Kg	Protein Kg	Solid Kg	Fat %	Prot %
200	16	14	30	0.14	0.12

FERTILITY

Calving Interval	Survival
-3.03	2.71%

CALVING

Gestation	Dairy Cow	Dairy Heifer
-4.94	1.84	4.19
(99% Rel.)	(98% Rel.)	(99% Rel.)

FR2249 COOLNASOON ART

International ID

HOLIRLM141827832449

aAa: 243

PED FR 25%

M. Murphy, Macroom, Co.Cork



DoveaGENETICS

Coolnasoon Art Daughter



Daughter - 305 Day Milk Records								
Daughters	Herds	Parity	Milk Kg	Fat Kg	Pro Kg	Fat %	Pro %	Kg Solids
5697	1319	1	5885	242	216	4.11	3.67	458
3341	1053	2	6919	281	254	4.06	3.67	535
728	313	3	7293	302	271	4.11	3.72	573

AGH X IRP X CWJ

- Farmer Favourite
- Protein Improver at +21kg
- Wide Rumps & Rear Udders
- 9000 Daughter Lactations Recorded

EBI	JAN. 22	SOURCE	ICBF	REL
EBI	225	96%		
Prod. SI	120	99%		
Fert. SI	76	92%		
Calv. SI	49	98%		
Beef. SI	-16	99%		
Maint. SI	-2	99%		
Mgmt. SI	10	78%		
Health SI	-11	97%		



PRODUCTION					
Milk Kg	Fat Kg	Protein Kg	Solid Kg	Fat %	Prot %
335	13	21	34	-0.01	0.16

FERTILITY	
Calving Interval	Survival
-3.60	2.49%

CALVING		
Gestation	Dairy Cow	Dairy Heifer
-5.27 (99%Rel.)	2.57 (99% Rel.)	6.62 (99% Rel.)

FR4154 HAGGARD FRANKO

International ID

HOLIRLM371015352211

aAa: 243

PED FR 16%

M. Murphy, Ramsgrange, Co. Wexford



DoveaGENETICS

Haggard Franko Daughter



Daughter - 305 Day Milk Records								
Daughters	Herds	Parity	Milk Kg	Fat Kg	Pro Kg	Fat %	Pro %	Kg Solids
3002	800	1	5520	246	199	4.46	3.61	445
194	79	2	6471	287	236	4.44	3.65	523

SEW X PZS X PKK

- Proven Production & Fertility
- 31kg of Solids
- Proven Easy Calving
- Udder Improver

EBI	JAN. 22	SOURCE	ICBF	REL
EBI	228	91%		
Prod. SI	90	99%		
Fert. SI	90	81%		
Calv. SI	49	94%		
Beef. SI	-16	98%		
Maint. SI	9	97%		
Mgmt. SI	9	77%		
Health SI	-4	91%		



PRODUCTION					
Milk Kg	Fat Kg	Protein Kg	Solid Kg	Fat %	Prot %
137	21	10	31	0.26	0.09

FERTILITY	
Calving Interval	Survival
-4.02	3.20%

CALVING		
Gestation	Dairy Cow	Dairy Heifer
-4.32 (99%Rel.)	2.22 (99% Rel.)	5.01 (99% Rel.)

Daughter Proven

FR4397 CRAIGTOWN STORM

International ID

HOLIRLM222040470925

aAa: 165

SRM FR 22%

D. Ferguson, Fahan, Co. Donegal



DoveaGENETICS

Craigtown Storm Daughter



Daughter - 305 Day Milk Records							
Daughters Herds	Parity	Milk Kg	Fat Kg	Pro Kg	Fat %	Pro %	Kg Solids
313	108	1	5532	235	199	4.25	3.60

FR2239 X WWA X LBO

- Exciting New Daughter Proven Sire
- Milk Production Specialist
- Strong Daughters with Medium Size
- Use Storm to Open Chest Width

EBI	JAN. 22	SOURCE	ICBF	REL
EBI	211	85%		
Prod. SI	109	98%		
Fert. SI	69	72%		
Calv. SI	42	91%		
Beef. SI	-6	94%		
Maint. SI	0	81%		
Mgmt. SI	1	73%		
Health SI	-2	82%		



PRODUCTION					
Milk Kg	Fat Kg	Protein Kg	Solid Kg	Fat %	Prot %
348	19	17	36	0.09	0.09

FERTILITY	
Calving Interval	Survival
-4.05	1.41%

CALVING		
Gestation	Dairy Cow	Dairy Heifer
-4.18 (99% Rel.)	2.31 (97% Rel.)	5.81 (96% Rel.)

FR4439 KILLALOUGH SAMIR

International ID

HOLIRLM151671312088

aAa: 351

PED FR 25%

J. Ahern, Glanmire, Co. Cork



DoveaGENETICS

Killalough Samir Daughter



Daughter - 305 Day Milk Records							
Daughters Herds	Parity	Milk Kg	Fat Kg	Pro Kg	Fat %	Pro %	Kg Solids
655	244	1	5152	242	195	4.70	3.78

FR2339 X FZC X TEZ

- Solids Specialist (+0.36% Fat & +0.21% Protein)
- Medium Sized Daughters with Excellent Legs & Feet
- Ideal Low Maintenance Grazing Type
- Daughters Average 5152kgs @ 4.70% Fat & 3.78% Protein as Heifers

EBI	JAN. 22	SOURCE	ICBF	REL
EBI	251	88%		
Prod. SI	102	99%		
Fert. SI	106	74%		
Calv. SI	39	91%		
Beef. SI	-15	96%		
Maint. SI	15	94%		
Mgmt. SI	-4	73%		
Health SI	8	84%		



PRODUCTION					
Milk Kg	Fat Kg	Protein Kg	Solid Kg	Fat %	Prot %
-48	18	10	28	0.36	0.21

FERTILITY	
Calving Interval	Survival
-4.81	3.67%

CALVING		
Gestation	Dairy Cow	Dairy Heifer
-3.41 (99% Rel.)	2.29 (99% Rel.)	5.80 (99% Rel.)

Daughter Proven

FR7791 BARRACKHILL REUBEN

International ID

HOLIRLM216086311563

aAa: 423

PED

FR 35%

M. Teehan, Rathmoyle, Co Kilkenny



Barrackhill KOZ Romy 762 - Dam



DAM - 305 Day Milk Records

Lact.	Calved	Calv. Int	Milk Kg	Fat Kg	Pro Kg	Fat %	Pro %	Kg's Solids
7	08/05/2020	352	8165	349	304	4.27	3.73	653
Avg	8	362	7433	317	274	4.27	3.69	591

FR4513 X KOZ X TAE

- Ultra High EBI Bull €371
35% Friesian
- Milk Kgs with Components and Strength
Longevity Leader - Dam is 11 Years Old & Granddam is 13 Years Old
- Limited Semen Available Spring 2022

EBI JAN. 22	SOURCE	ICBF	REL
EBI 371			59%
Prod. SI	96		78%
Fert. SI	199		47%
Calv. SI	51		56%
Beef. SI	-13		47%
Maint. SI	16		45%
Mgmt. SI	10		59%
Health SI	11		63%



PRODUCTION

Milk Kg	Fat Kg	Protein Kg	Solid Kg	Fat %	Prot %
5	16	11	27	0.27	0.18

FERTILITY

Calving Interval	Survival
-11.90	3.98%

CALVING

Gestation	Dairy Cow	Dairy Heifer
-4.92	1.95	5.49
(61% Rel.)	(63% Rel.)	(54% Rel.)

FR2275 STONECARTHY GLEANNA

International ID

HOLIRLM211299690969

aAa: 156

PED

FR 31%

J. Sheehan, Stoneyford, Co. Kilkenny



Stonecarthy Gleanna Daughter



Daughter - 305 Day Milk Records

Daughters	Herds	Parity	Milk Kg	Fat Kg	Pro Kg	Fat %	Pro %	Kg Solids
4721	1117	1	5604	240	202	4.28	3.60	442
3421	988	2	6679	279	241	4.18	3.61	520
990	400	3	7128	303	258	4.25	3.62	561

GZY X FLT X KLX

- Over 9,000 Daughter Lactations Recorded
- Daughters are Low Stature, Strong Cows with Excellent Udder Structure
- Breeds Long Lasting, Productive Cows
- 31% Friesian

EBI JAN. 22	SOURCE	ICBF	REL
EBI 201			96%
Prod. SI	69		99%
Fert. SI	77		93%
Calv. SI	44		98%
Beef. SI	-1		99%
Maint. SI	4		99%
Mgmt. SI	0		77%
Health SI	9		97%



PRODUCTION

Milk Kg	Fat Kg	Protein Kg	Solid Kg	Fat %	Prot %
155	12	10	22	0.11	0.08

FERTILITY

Calving Interval	Survival
-3.53	2.60%

CALVING

Gestation	Dairy Cow	Dairy Heifer
-4.03	2.56	5.30
(99% Rel.)	(99% Rel.)	(99% Rel.)

TFZ FORTFERGUS ARTIC ORCA

International ID
HOLIRLM131358050963

aAa: 345

SRM FR 35%

T.Garry, Ennis, Co.Clare



Fortfergus Artic Orca - TFZ

Daughter - 305 Day Milk Records								
Daughters	Herds	Parity	Milk Kg	Fat Kg	Pro Kg	Fat %	Pro %	Kg Solids
2773	740	1	5341	240	198	4.49	3.71	438
2303	706	2	6288	279	236	4.44	3.75	515
1848	643	3	6760	304	253	4.50	3.74	557
490	224	4	6988	318	261	4.55	3.73	579

EBI	JAN. 22	SOURCE	ICBF	REL
EBI	202			96%
Prod. SI	109			99%
Fert. SI	57			94%
Calv. SI	28			98%
Beef. SI	-24			99%
Maint. SI	26			99%
Mgmt. SI	2			80%
Health SI	4			96%

PRODUCTION					
Milk Kg	Fat Kg	Protein Kg	Solid Kg	Fat %	Prot %
26	21	12	33	0.34	0.19

FERTILITY		CALVING		
Calving Interval	Survival	Gestation	Dairy Cow	Dairy Heifer
-3.14	1.42%	-2.15 (99% Rel.)	2.49 (99% Rel.)	6.83 (98% Rel.)

- Daughters with Tremendous Strength
- Feet, Legs & Locomotion Improver
- 3rd Lactation Daughters Produced 6760kg Milk at 4.50% Fats & 3.74% Protein

DoveaGENETICS



GOLDEN OLDIES

SEW

PED

SEAROAD AWS PAMELA 1



EBI
€171

- Tremendous Udders
- Irish Daughters Average 6400 kg Milk at 4.32% Fat & 3.63% Protein

GZY

PED

GADDAGH CUDDY REEKS



EBI
€192

- Impressive Protein +0.23% Bull
- 10,000 Milk Recorded Daughters have Averaged 6423 kg Milk at 4.28% Fat & 3.78% Protein

XTG

PED

TISAXON DOUGIE



EBI
€174

- Fantastic Protein with Type
- Daughters Average 6453 kg Milk at 4.33% Fat & 3.68% Protein

FZZ

PED

FIRODA MARTELL 10



EBI
€80

- Component Specialist
- Daughters Averaged 6406 kg Milk at 4.15% Fat & 3.57% Protein

PZZ

PED

DOVEA PIETMAN



EBI
€111

- Powerful Black Friesian Cattle
- Daughters Average 6947 kg Milk at 4.04% Fat & 3.50% Protein

ZRL

PED

CURRA ROYAL LAURENCE



EBI
€159

- 11 Sons in AI
- Daughters Average 6477 kg Milk at 4.23% Fat & 3.64% Protein

FR8061 FAIRYLAWN BERNARD 2387

International ID

HOLIRLM215117792387

aAa: 156

FR 84%
PED

K. O'Connor, Loughill, Co. Limerick



Alger Meekma

DoveaGENETICS

Bernard 26 (S2075) - Sire



DAM - 305 Day Milk Records								
Lact.	Calved	Calv. Int	Milk Kg	Fat Kg	Pro Kg	Fat %	Pro %	Kg's Solids
1	24/02/2020	N/A	7557	333	288	4.41	3.82	621
Avg	2	355	7721	310	293	4.02	3.78	603

S2075 X RIP X IE241719051219

- Ireland's Highest Index Friesian Sire
- Excellent Percentages (+0.22% Fat & +0.11% Protein)
- Tremendous Protein in the Kit Cow Family
- Interesting 156 aAa Code
- Semen Available May 2022

EBI	JAN. 22	SOURCE	ICBF	REL
242	53%			
Prod. SI	40	73%		
Fert. SI	159	39%		
Calv. SI	30	46%		
Beef. SI	-20	41%		
Maint. SI	21	38%		
Mgmt. SI	4	57%		
Health SI	10	60%		



PRODUCTION					
Milk Kg	Fat Kg	Protein Kg	Solid Kg	Fat %	Prot %
-116	8	2	10	0.22	0.11

FERTILITY	
Calving Interval	Survival
-9.96	2.67%

CALVING		
Gestation	Dairy Cow	Dairy Heifer
-2.50 (44% Rel.)	2.31 (57% Rel.)	6.73 (46% Rel.)

FR8070 KILSUNNY HERBERT 2

International ID

HOLIRLM219778761942

aAa: 465

FR 94%
PED

Dudley Family, Thurles, Co. Tipperary



Alger Meekma

DoveaGENETICS

Bloemplaat Hoeve Ewoud (FR4317) - Sire



DAM - 305 Day Milk Records								
Lact.	Calved	Calv. Int	Milk Kg	Fat Kg	Pro Kg	Fat %	Pro %	Kg's Solids
2	21/12/2018	352	7980	332	323	4.16	4.05	655
Avg	4	355	7721	337	314	4.18	3.88	651

FR4317 X RIP X AFS

- New Release from the Kilsunny Herd
- Excellent Components
- Traditional Friesian Strength
- Dam Kilsunny Ruby 119 VG87 is a 3.91% Protein Cow with a Superb Udder
- Semen Available May 2022

EBI	JAN. 22	SOURCE	ICBF	REL
170	54%			
Prod. SI	32	76%		
Fert. SI	89	36%		
Calv. SI	35	53%		
Beef. SI	-6	45%		
Maint. SI	18	43%		
Mgmt. SI	-1	56%		
Health SI	3	59%		



PRODUCTION					
Milk Kg	Fat Kg	Protein Kg	Solid Kg	Fat %	Prot %
-68	5	3	8	0.13	0.09

FERTILITY	
Calving Interval	Survival
-5.90	1.22%

CALVING		
Gestation	Dairy Cow	Dairy Heifer
-3.73 (60% Rel.)	2.23 (60% Rel.)	6.12 (48% Rel.)

Pure Friesian

FR4756 FIRODA JUBILARIS 11

International ID

HOLIRLM216653492532

aAa: 462

PED 97%

P. Healy, Castlecomer, Co. Kilkenny



DoveaGENETICS

Firoda SVD Twink 2 EX90 3E - Dam



DAM - 305 Day Milk Records								
Lact.	Calved	Calv. Int	Milk Kg	Fat Kg	Pro Kg	Fat %	Pro %	Kg's Solids
3	30/01/2011	337	7619	303	284	3.97	3.73	587
Avg	9	N/A	7519	280	276	3.73	3.68	557

JRB X SVD X HWT

- Ireland's Highest Milk Sub Index Friesian
- Milk Solids & Friesian Type All in One Package
- Dam Produced 65,000 Kgs Milk at 3.64% Protein
- Available Sexed Ultra 4M

EBI	JAN. 22	SOURCE	ICBF	REL
209				61%
Prod. SI	63			63%
Fert. SI	110			48%
Calv. SI	31			89%
Beef. SI	-23			78%
Maint. SI	13			55%
Mgmt. SI	5			62%
Health SI	9			69%



PRODUCTION					
Milk Kg	Fat Kg	Protein Kg	Solid Kg	Fat %	Prot %
2	6	9	15	0.11	0.15

FERTILITY	
Calving Interval	Survival
-6.72	2.04%

CALVING		
Gestation	Dairy Cow	Dairy Heifer
-3.01 (99% Rel.)	2.41 (97% Rel.)	5.89 (91% Rel.)

FR5770 FIRODA JUBILARIS 22

International ID

HOLIRLM216653462637

aAa: 426

PED 97%

P. Healy, Castlecomer, Co. Kilkenny



DoveaGENETICS

Firoda LFK Twink 3 VG87 - Dam



DAM - 305 Day Milk Records								
Lact.	Calved	Calv. Int	Milk Kg	Fat Kg	Pro Kg	Fat %	Pro %	Kg's Solids
3	10/01/2019	362	7633	350	279	4.58	3.66	629
Avg	5	362	7502	314	276	4.18	3.69	590

JRB X LFK X TAE

- The Protein Specialist
- Excellent Protein Family
- Very Nice British Friesian Cattle
- 4 Generations of VG/EX



EBI	JAN. 22	SOURCE	ICBF	REL
214				62%
Prod. SI	36			77%
Fert. SI	117			48%
Calv. SI	53			82%
Beef. SI	-19			53%
Maint. SI	21			47%
Mgmt. SI	0			57%
Health SI	7			63%

PRODUCTION					
Milk Kg	Fat Kg	Protein Kg	Solid Kg	Fat %	Prot %
-113	2	4	6	0.11	0.13

FERTILITY	
Calving Interval	Survival
-6.93	2.40%

CALVING		
Gestation	Dairy Cow	Dairy Heifer
-5.13 (97% Rel.)	1.99 (90% Rel.)	6.19 (54% Rel.)

Pure Friesian

FR4754 RAHEENARRAN MR DOYLE 2

International ID
HOLIRLM215997813413

aAa: 561

PEP FR
97%

B. Daniels, Kilmaganny, Co. Kilkenny



Raheenarran MKX Dirine 2 VG86 - Dam



DAM - 305 Day Milk Records								
Lact.	Calved	Calv. Int	Milk Kg	Fat Kg	Pro Kg	Fat %	Pro %	Kg's Solids
3	31/01/2015	367	6087	322	256	5.29	4.20	578
Avg	9	367	6058	276	235	4.54	3.88	511

EBI JAN. 22 SOURCE ICBF REL	
EBI	218 66%
Prod. SI	11 77%
Fert. SI	155 51%
Calv. SI	34 83%
Beef. SI	-26 68%
Maint. SI	26 55%
Mgmt. SI	3 64%
Health SI	14 67%

PRODUCTION					
Milk Kg	Fat Kg	Protein Kg	Solid Kg	Fat %	Prot %
-98	3	-1	2	0.12	0.05

FERTILITY		CALVING		
Calving Interval	Survival	Gestation	Dairy Cow	Dairy Heifer
-10.55	1.79%	-3.58 (98%Rel.)	2.29 (89% Rel.)	5.23 (64% Rel.)

- Proven Easy Calving
- Bred for Longevity
- Feet, Legs & Locomotion
- Dam is Currently on her 9th Lactation



FR5476 JAAP VAN NOORDEINDE

International ID
HOLNLDM000676967441

aAa: 516

PEP FR
100%



Jaap Van Noordeinde - FR5476



DAM - 305 Day Milk Records								
Lact.	Calved	Calv. Int	Milk Kg	Fat Kg	Pro Kg	Fat %	Pro %	Kg's Solids
5	09/02/2018	365	9033	401	361	4.44	4.00	762
Avg	8	384	7649	336	297	4.39	3.88	633

EBI JAN. 22 SOURCE ICBF REL	
EBI	75 50%
Prod. SI	-28 66%
Fert. SI	76 31%
Calv. SI	22 75%
Beef. SI	-22 40%
Maint. SI	26 34%
Mgmt. SI	2 50%
Health SI	-1 52%

PRODUCTION					
Milk Kg	Fat Kg	Protein Kg	Solid Kg	Fat %	Prot %
-186	-4	-6	-10	0.07	0.00

FERTILITY		CALVING		
Calving Interval	Survival	Gestation	Dairy Cow	Dairy Heifer
-5.69	0.34%	-3.28 (94%Rel.)	2.73 (84% Rel.)	5.58 (43% Rel.)

- Traditional Friesian Sire
- Medium Sized Powerhouse
- 4% Protein Dam
- Full Outcross Pedigree



FR6808 FIRODA JUBILARIS 28

International ID
HOLIRLM216653492813

aAa: 534

PEP FR
94%

P. Healy, Castlecomer, Co. Kilkenny



Firoda GTW Twin VG87 - Dam



DAM - 305 Day Milk Records								
Lact.	Calved	Calv. Int	Milk Kg	Fat Kg	Pro Kg	Fat %	Pro %	Kg's Solids
3	03/01/2020	344	8064	361	312	4.48	3.86	673
Avg	4	368	7712	320	292	4.14	3.79	612

EBI JAN. 22 SOURCE ICBF REL	
EBI	164 59%
Prod. SI	50 77%
Fert. SI	62 47%
Calv. SI	48 56%
Beef. SI	-23 46%
Maint. SI	15 46%
Mgmt. SI	8 57%
Health SI	4 65%

PRODUCTION					
Milk Kg	Fat Kg	Protein Kg	Solid Kg	Fat %	Prot %
1	5	7	12	0.08	0.12

FERTILITY		CALVING		
Calving Interval	Survival	Gestation	Dairy Cow	Dairy Heifer
-4.10	0.82%	-4.43 (61%Rel.)	1.91 (60% Rel.)	3.85 (53% Rel.)

- Three Generations of Easy Calving
- Excellent Components
- Teat Length Improver



FOE FIRODA MEINSE 2

International ID

HOLIRLM211180391923

aAa: 426

PED FR 88%

P. Healy, Castlecomer, Co. Kilkenny



DoveaGENETICS

Firoda Meinse 2 Daughter



Daughter - 305 Day Milk Records

Daughters	Herds	Parity	Milk Kg	Fat Kg	Pro Kg	Fat %	Pro %	Kg Solids
338	134	1	5377	227	189	4.22	3.51	416
294	124	2	6320	264	225	4.18	3.56	489
157	81	3	6724	286	241	4.25	3.58	527
54	35	4	6827	293	243	4.29	3.56	536

TMI X SVD X BAV

- Hugely Popular Daughter Proven Bull
- Transmits +0.17% Butterfat
- Lovely Friesian Type with Will to Milk
- 50% of 1st Lactation Daughters Score GP or Higher
- Available Sexed Ultra 4M

EBI	JAN. 22	SOURCE	ICBF	REL
EBI	159		91%	
Prod. SI	27		99%	
Fert. SI	113		84%	
Calv. SI	11		95%	
Beef. SI	-10		98%	
Maint. SI	11		89%	
Mgmt. SI	5		79%	
Health SI	2		86%	



PRODUCTION

Milk Kg	Fat Kg	Protein Kg	Solid Kg	Fat %	Prot %
-9	9	1	10	0.17	0.02

FERTILITY

Calving Interval	Survival
-6.79	2.20%

CALVING

Gestation	Dairy Cow	Dairy Heifer
-1.34	3.07	5.07
(99% Rel.)	(99% Rel.)	(80% Rel.)

FR4133 RAHEENARRAN MR POTTER

International ID

HOLIRLM211056192652

aAa: 645

PED FR 94%

B. Daniels, Kilmaganny, Co. Kilkenny



DoveaGENETICS

Raheenarran PDY Dairine VG85 - Dam



Daughter - 305 Day Milk Records

Daughters	Herds	Parity	Milk Kg	Fat Kg	Pro Kg	Fat %	Pro %	Kg Solids
53	21	1	5412	226	190	4.18	3.51	416
21	10	2	6439	266	231	4.13	3.59	497

FOE X PDY X BCG

- Daughter Proven
- Positive Milk Kgs with Components
- Strong Daughters with Excellent Fertility



EBI	JAN. 22	SOURCE	ICBF	REL
EBI	160		77%	
Prod. SI	33		93%	
Fert. SI	89		61%	
Calv. SI	26		84%	
Beef. SI	-15		89%	
Maint. SI	15		67%	
Mgmt. SI	4		68%	
Health SI	8		72%	

PRODUCTION

Milk Kg	Fat Kg	Protein Kg	Solid Kg	Fat %	Prot %
60	4	5	9	0.03	0.05

FERTILITY

Calving Interval	Survival
-5.25	1.84%

CALVING

Gestation	Dairy Cow	Dairy Heifer
-3.29	2.44	7.69
(97% Rel.)	(90% Rel.)	(73% Rel.)

DAUGHTER PROVEN

FR6166 JAN 10

International ID
HOLNLDM000627583560

aAa: 462

PED FR 100%



Jan 10 - FR6166



Dam - 305 Day Milk Records				
Age	Days	Milk Kgs	Fat %	Protein %
2.01	297	5938	4.45	3.82
3.00	285	6838	4.17	3.67
4.00	301	7677	4.41	3.84
4.11	306	7657	4.30	3.77

SAKE X ANNE 2 X DORUS 11

- Outcross Sire
- From Low Input Grazing Farm in the Netherlands
- Superb Dam Performance
- Increased EBI in 2022
- **Sexed Semen Available**

EBI JAN. 22	SOURCE ICBF	REL
EBI	99	40%
Prod. SI	-40	55%
Fert. SI	90	22%
Calv. SI	40	57%
Beef. SI	-12	34%
Maint. SI	21	32%
Mgmt. SI	1	45%
Health SI	-2	47%



PRODUCTION					
Milk Kg	Fat Kg	Protein Kg	Solid Kg	Fat %	Prot %
-265	-9	-8	-17	0.03	0.02

FERTILITY	
Calving Interval	Survival
-6.65	0.53%

CALVING		
Gestation	Dairy Cow	Dairy Heifer
-3.87 (77% Rel.)	2.32 (52% Rel.)	5.01 (46% Rel.)

DAUGHTER PROVEN

FR4317 BLOEMPLAAT HOEVE EWOU

International ID
DFRNLDM000657465180

aAa: 453

PED FR 100%



Bloemplaat Hoeve Ewoud - FR4317



Daughter - 305 Day Milk Records								
Daughters Herds	Parity	Milk Kg	Fat Kg	Pro Kg	Fat %	Pro %	Kg Solids	
81	47	1	5524	231	195	4.18	3.53	426

S2075 X JACOB 8 X RIV

- New Daughter Proven Sire
- Components Improver
- Dam Averaged 8323kg Milk at 5.07% Fat & 3.81% protein
- aAa 453

EBI JAN. 22	SOURCE ICBF	REL
EBI	125	74%
Prod. SI	10	92%
Fert. SI	75	50%
Calv. SI	29	84%
Beef. SI	-17	91%
Maint. SI	20	78%
Mgmt. SI	1	67%
Health SI	7	67%



PRODUCTION					
Milk Kg	Fat Kg	Protein Kg	Solid Kg	Fat %	Prot %
-92	0	0	0	0.07	0.06

FERTILITY	
Calving Interval	Survival
-4.85	1.10%

CALVING		
Gestation	Dairy Cow	Dairy Heifer
-3.27 (98% Rel.)	2.56 (95% Rel.)	6.30 (72% Rel.)

Pure Friesian

FR4435 KIRKBY HARRIER

International ID

HOLGBRM200910502026

aAa: 561



Dovea GENETICS

Kirkby Harrier Daughter



Daughter - 305 Day Milk Records

Daughters Herds	Parity	Milk Kg	Fat Kg	Pro Kg	Fat %	Pro %	Kg Solids
56	33	1	5291	227	181	4.29	3.42
			408				

YSP X WFZ X KIRKBY PANAMA

- Daughter Proven Outcross
- Snug Udder Improver
- 70% of Heifers Score GP or Higher
- EX91 Dam Averaged 8096kg Milk at 4.4% Fat & 3.5% Protein

EBI	JAN. 22	SOURCE	ICBF	REL
132	75%			
Prod. SI	-5	90%		
Fert. SI	115	59%		
Calv. SI	6	85%		
Beef. SI	-28	91%		
Maint. SI	26	59%		
Mgmt. SI	4	63%		
Health SI	15	67%		

PRODUCTION

Milk Kg	Fat Kg	Protein Kg	Solid Kg	Fat %	Prot %
-7	6	-3	3	0.10	-0.05

FERTILITY

Calving Interval	Survival
-7.57	1.58%

CALVING

Gestation	Dairy Cow	Dairy Heifer
-3.10 (98% Rel.)	4.21 (93% Rel.)	10.66 (79% Rel.)

FR4424 LISMULLIGAN EXCALIBUR

International ID

HOLGBRM541827302135

aAa: 435



Dovea GENETICS

Lismulligan Excalibur Daughter



Daughter - 305 Day Milk Records

Daughters Herds	Parity	Milk Kg	Fat Kg	Pro Kg	Fat %	Pro %	Kg Solids
21	16	1	5707	236	198	4.14	3.47
			434				

YFF X LISMULLIGAN GAMBLER X CATLANE CHALLENGER

- Daughter Proven Outcross
- Positive Milk Kgs with Components
- Great Farmer Satisfaction
- Breeds Medium Sized, Robust Cows

EBI	JAN. 22	SOURCE	ICBF	REL
112	65%			
Prod. SI	22	82%		
Fert. SI	70	46%		
Calv. SI	6	74%		
Beef. SI	-5	74%		
Maint. SI	8	61%		
Mgmt. SI	-1	52%		
Health SI	12	58%		

PRODUCTION

Milk Kg	Fat Kg	Protein Kg	Solid Kg	Fat %	Prot %
65	4	3	7	0.02	0.02

FERTILITY

Calving Interval	Survival
-4.48	1.13%

CALVING

Gestation	Dairy Cow	Dairy Heifer
-1.95 (92% Rel.)	3.59 (79% Rel.)	8.72 (55% Rel.)

FR2306 BERNARD 28

International ID

HOLNLDM000724675870

aAa: 432

FR 100%
PED



Alger Meekma

Bernard 28 Daughter



Daughter - 305 Day Milk Records

Daughters	Herds	Parity	Milk Kg	Fat Kg	Pro Kg	Fat %	Pro %	Kg Solids
47	23	1	5475	228	195	4.16	3.56	423
36	17	2	6337	264	228	4.17	3.60	492
24	13	3	6639	283	239	4.26	3.60	522

TARZAN 8 X BERNARD 25 X CHRIS 5

- Easy Calving - Suitable for Heifers
- Milking Daughters with Massive Components and Good Fertility
- VG87 Dam Averaged 9472kg Milk at 4.54% Fat & 3.73% Protein

EBI	JAN. 22	SOURCE	ICBF	REL
EBI	131	74%		
Prod. SI	-12	93%		
Fert. SI	91	49%		
Calv. SI	42	88%		
Beef. SI	-25	90%		
Maint. SI	28	75%		
Mgmt. SI	3	62%		
Health SI	3	69%		

PRODUCTION

Milk Kg	Fat Kg	Protein Kg	Solid Kg	Fat %	Prot %
-258	-3	-5	-8	0.13	0.07

FERTILITY

Calving Interval	Survival
-5.32	1.92%

CALVING

Gestation	Dairy Cow	Dairy Heifer
-3.06	1.83	4.70
(99% Rel.)	(95% Rel.)	(96% Rel.)

FR2276 FIRODA RANDY 7

International ID

HOLIRLM211180342041

aAa: 516

FR 97%
PED



P. Healy, Castlecomer, Co. Kilkenny

Firoda Randy 7 Daughters



Daughter - 305 Day Milk Records

Daughters	Herds	Parity	Milk Kg	Fat Kg	Pro Kg	Fat %	Pro %	Kg Solids
442	149	1	5395	227	192	4.21	3.56	419
291	116	2	6417	268	231	4.18	3.60	499

LFK X VML X SVD

- The Complete Package
- Daughters Confirm Milk Kgs with Percentages
- Exceptional Power and Strength
- Long-Lasting Cows
- Super Protein Family with 4 Successive Generations of Excellent Cows

EBI	JAN. 22	SOURCE	ICBF	REL
EBI	139	91%		
Prod. SI	41	99%		
Fert. SI	71	83%		
Calv. SI	30	95%		
Beef. SI	-13	98%		
Maint. SI	16	87%		
Mgmt. SI	-4	77%		
Health SI	-3	87%		

PRODUCTION

Milk Kg	Fat Kg	Protein Kg	Solid Kg	Fat %	Prot %
50	8	5	13	0.10	0.06

FERTILITY

Calving Interval	Survival
-3.74	1.93%

CALVING

Gestation	Dairy Cow	Dairy Heifer
-2.51	2.52	6.20
(99% Rel.)	(98% Rel.)	(93% Rel.)

Pure Friesian

FR6376 VDR SLASH

International ID

HOLNLDM000872390502

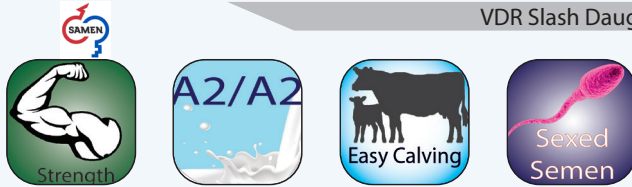
aAa: 153

PED



Alger Meekma

VDR Slash Daughter



Linear Trait Profile: ICBF Jan. 2022

Overall		-5	0	5		
Body	Poor				Excellent	+0.66
Dairy Strength	Poor				Excellent	+0.49
Feet & Legs	Poor				Excellent	+2.01
Mammary	Poor				Excellent	+0.82
Conformation	Poor				Excellent	+1.43

BALU X MALKI X MINOS

- Complete Bull
- Super Milk Solids
- Easy Calving - Suitable for Maiden Heifers
- Impressive Black Cows
- 4% Protein Dam
- **Sexed Semen Available**

EBI JAN. 22	SOURCE ICBF	REL
EBI	160	66%
Prod. SI	100	87%
Fert. SI	15	59%
Calv. SI	47	66%
Beef. SI	-7	37%
Maint. SI	-13	36%
Mgmt. SI	-2	56%
Health SI	19	66%



PRODUCTION

Milk Kg	Fat Kg	Protein Kg	Solid Kg	Fat %	Prot %
325	17	16	33	0.07	0.08

FERTILITY

Calving Interval	Survival
-0.13	1.10%

CALVING

Gestation	Dairy Cow	Dairy Heifer
-5.23 (69% Rel.)	2.19 (88% Rel.)	6.10 (57% Rel.)

FR7647 MACGYVER VAN DE PEUL

International ID

HOLNLDM000929799654

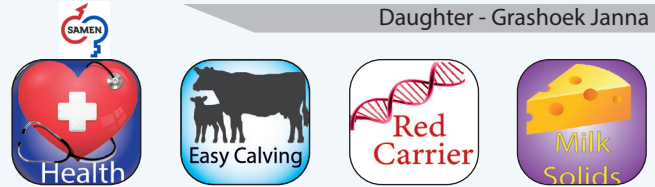
aAa: 513

PED



Alger Meekma

Daughter - Grashoek Janna 155



Linear Trait Profile: ICBF Jan. 2022

Overall		-5	0	5		
Body	Poor				Excellent	-0.39
Dairy Strength	Poor				Excellent	+0.01
Feet & Legs	Poor				Excellent	+2.08
Mammary	Poor				Excellent	+1.82
Conformation	Poor				Excellent	+2.07

DELEGATE X AIKMAN X GOLDWYN

- Super Milk Solids
- Medium Sized Cows with Exceptional Udders
- First Lactation Daughters Yielded 7,644 Kgs at 3.62% Protein & 4.45% Fat (617 Kgs Milk Solids)

EBI JAN. 22	SOURCE ICBF	REL
EBI	175	63%
Prod. SI	72	88%
Fert. SI	66	55%
Calv. SI	25	51%
Beef. SI	-10	38%
Maint. SI	-3	35%
Mgmt. SI	-9	53%
Health SI	35	64%



PRODUCTION

Milk Kg	Fat Kg	Protein Kg	Solid Kg	Fat %	Prot %
164	15	9	24	0.14	0.07

FERTILITY

Calving Interval	Survival
-3.11	2.17%

CALVING

Gestation	Dairy Cow	Dairy Heifer
-2.47 (43% Rel.)	2.74 (82% Rel.)	6.68 (46% Rel.)

FR7554 GO-FARM INSEME SPRITE

International ID

HOLITAM019991517154

aAa: N/A

PED



Luca Nelli

Daughter - Gribaudo Sprite C



Linear Trait Profile: ICBF Jan. 2022						
Overall		-5	0	5		
Body	Poor				Excellent	+0.09
Dairy Strength	Poor				Excellent	+0.63
Feet & Legs	Poor				Excellent	+2.85
Mammary	Poor				Excellent	+2.23
Conformation	Poor				Excellent	+2.81

AFTERBURNER X SPEAKER X NUMERO UNO

- High EBI Daughter Proven
- High Solids
- High Health
- Beautiful Cows
- **Limited Sexed Semen Available**

EBI JAN. 22	SOURCE ICBF	REL
EBI	212	68%
Prod. SI	105	90%
Fert. SI	57	65%
Calv. SI	27	54%
Beef. SI	-12	43%
Maint. SI	0	38%
Mgmt. SI	5	61%
Health SI	29	71%



PRODUCTION

Milk Kg	Fat Kg	Protein Kg	Solid Kg	Fat %	Prot %
267	20	15	35	0.17	0.10

FERTILITY

Calving Interval	Survival
-2.92	1.61%

CALVING

Gestation	Dairy Cow	Dairy Heifer
-4.43 (44%Rel.)	3.50 (81% Rel.)	8.18 (58% Rel.)

FR7653 GO-FARM MIURA ET

International ID

HOLITAM019991486573

aAa: 342

PED



Luca Nelli

Daughter - Ca' dei Volti Miura Sacra



Linear Trait Profile: ICBF Jan. 2022						
Overall		-5	0	5		
Body	Poor				Excellent	+0.92
Dairy Strength	Poor				Excellent	+0.36
Feet & Legs	Poor				Excellent	+2.37
Mammary	Poor				Excellent	+2.15
Conformation	Poor				Excellent	+2.68

AFTERBURNER X ENFORCER X BOOKEM

- No.1 Daughter Proven in Italy
- Good Balance Between Milk (+430 Kgs) & Milk Solids (+0.09% Fat & +0.09% Protein)
- Easy Calving
- **Sexed Semen Available**

EBI JAN. 22	SOURCE ICBF	REL
EBI	187	66%
Prod. SI	125	89%
Fert. SI	26	60%
Calv. SI	35	53%
Beef. SI	-12	43%
Maint. SI	-4	38%
Mgmt. SI	0	62%
Health SI	17	71%



PRODUCTION

Milk Kg	Fat Kg	Protein Kg	Solid Kg	Fat %	Prot %
430	22	20	42	0.09	0.09

FERTILITY

Calving Interval	Survival
-1.56	0.55%

CALVING

Gestation	Dairy Cow	Dairy Heifer
-3.84 (45%Rel.)	2.96 (77% Rel.)	6.58 (59% Rel.)

FR6463 CO-OP AARDEMA BERRY BLAK-ET

International ID

HOL840M003138766425

aAa: 342

PED



Sarah Damour

Co-op Stoic 6895 7724-ET - Dam



Linear Trait Profile: ICBF Jan. 2022

Overall		-5	0	5		
Body	Poor				Excellent	-0.31
Dairy Strength	Poor				Excellent	+0.40
Feet & Legs	Poor				Excellent	+0.64
Mammary	Poor				Excellent	+1.80
Conformation	Poor				Excellent	+1.70

SOLARIS X STOIC X NUMERO UNO

- High EBI Daughter Proven
- Easy Calving - Suitable for Maiden Heifers
- High Solids

EBI JAN. 22	SOURCE ICBF	REL
EBI	229	65%
Prod. SI	114	87%
Fert. SI	75	57%
Calv. SI	28	72%
Beef. SI	-6	35%
Maint. SI	-6	34%
Mgmt. SI	5	57%
Health SI	19	66%



PRODUCTION

Milk Kg	Fat Kg	Protein Kg	Solid Kg	Fat %	Prot %
387	20	18	38	0.08	0.09

FERTILITY

Calving Interval	Survival
-4.39	1.55%

CALVING

Gestation	Dairy Cow	Dairy Heifer
-2.24 (81% Rel.)	2.30 (85% Rel.)	5.86 (65% Rel.)

FR5746 WEGGELHORSTER DISCLOSURE

International ID

HOLNLDM000932421854

aAa: 516

PED



Alger Me...

VEECOM

Disclosure Daughters



Linear Trait Profile: ICBF Jan. 2022

Overall		-5	0	5		
Body	Poor				Excellent	+0.43
Dairy Strength	Poor				Excellent	+0.28
Feet & Legs	Poor				Excellent	+0.54
Mammary	Poor				Excellent	+0.54
Conformation	Poor				Excellent	+0.97

MAIK X RAMOS X SHOTTLE

- High EBI Daughter Proven
- Super Daughters - Average Size with Width & Balance
- Easy Calving - Suitable for Maiden Heifers
- Exceptional Fertility

EBI JAN. 22	SOURCE ICBF	REL
EBI	224	74%
Prod. SI	55	89%
Fert. SI	118	76%
Calv. SI	34	79%
Beef. SI	-4	42%
Maint. SI	6	39%
Mgmt. SI	-3	65%
Health SI	20	75%



PRODUCTION

Milk Kg	Fat Kg	Protein Kg	Solid Kg	Fat %	Prot %
340	13	10	23	0.00	-0.03

FERTILITY

Calving Interval	Survival
-5.67	3.75%

CALVING

Gestation	Dairy Cow	Dairy Heifer
-2.75 (91% Rel.)	2.21 (90% Rel.)	5.53 (68% Rel.)

FR5722 YOURI

International ID

HOLNLDM000718733597

aAa: 462

PED



Alger Meekma

Youri Daughter - Hoda 58



Linear Trait Profile: ICBF Jan. 2022

Overall		-5	0	5		
Body	Poor				Excellent	-0.14
Dairy Strength	Poor				Excellent	-0.04
Feet & Legs	Poor				Excellent	+2.34
Mammary	Poor				Excellent	+1.37
Conformation	Poor				Excellent	+1.80

JUX X APINA CEDRIC X STADEL

- Solids Specialist (+0.17% Fat & +0.08% Protein)
- Easy Calving - Suitable for Maiden Heifers
- High Health
- Look at his EBI Development in 2022

EBI JAN. 22	SOURCE ICBF	REL
EBI	197	74%
Prod. SI	58	87%
Fert. SI	95	74%
Calv. SI	16	77%
Beef. SI	-4	50%
Maint. SI	9	46%
Mgmt. SI	3	59%
Health SI	20	73%



PRODUCTION

Milk Kg	Fat Kg	Protein Kg	Solid Kg	Fat %	Prot %
49	12	7	19	0.17	0.08

FERTILITY

Calving Interval	Survival
-5.24	2.32%

CALVING

Gestation	Dairy Cow	Dairy Heifer
-1.08 (87% Rel.)	2.55 (89% Rel.)	5.55 (63% Rel.)

S706 TIMMER CLIMAX

International ID

HOLNLDM000415877174

aAa: 516

PED



Alger Meekma

Timmer Climax Daughter - Arina



Linear Trait Profile: ICBF Jan. 2022

Overall		-5	0	5		
Body	Poor				Excellent	-0.56
Dairy Strength	Poor				Excellent	+0.02
Feet & Legs	Poor				Excellent	+0.54
Mammary	Poor				Excellent	+0.00
Conformation	Poor				Excellent	+0.29

OMAN X NOVALIS X AMOS

- Super Strong, Trouble-Free Cows
- Easy Calving - Suitable for Maiden Heifers



EBI JAN. 22	SOURCE ICBF	REL
EBI	170	95%
Prod. SI	58	99%
Fert. SI	57	91%
Calv. SI	42	96%
Beef. SI	-11	98%
Maint. SI	15	93%
Mgmt. SI	-1	87%
Health SI	10	90%

PRODUCTION

Milk Kg	Fat Kg	Protein Kg	Solid Kg	Fat %	Prot %
236	12	9	21	0.05	0.02

FERTILITY

Calving Interval	Survival
-2.82	1.75%

CALVING

Gestation	Dairy Cow	Dairy Heifer
-3.11 (99% Rel.)	2.18 (97% Rel.)	4.58 (96% Rel.)

FR6460 MB AMAX RDC

International ID

HOLDEUM000356607584

aAa: 234

PED

FR7539 PEAK NOTICE-PP-ET

International ID

HOL840M003205435922

aAa: 324

PED



Daughter - Amax Shelby UK GP82



GDam - Cookiecutter Sshot Honor ET



Linear Trait Profile: ICBF Jan. 2022						
Overall		-5	0	5		
Body	Poor				Excellent	+0.71
Dairy Strength	Poor				Excellent	+0.44
Feet & Legs	Poor				Excellent	+4.24
Mammary	Poor				Excellent	+1.36
Conformation	Poor				Excellent	+2.78

Linear Trait Profile: ICBF Jan. 2022						
Overall		-5	0	5		
Body	Poor				Excellent	+0.27
Dairy Strength	Poor				Excellent	+1.38
Feet & Legs	Poor				Excellent	+1.53
Mammary	Poor				Excellent	+3.03
Conformation	Poor				Excellent	+3.04

AIKMAN X PIONEER X MAN OMAN

ALTADELSON X ALTAMIGHTY X SUPERSHOT

- High EBI, Daughter Proven
- Milk & Solids Combined
- Easy Calving
- Fertility Improver

- Balanced Bull at 363 Kgs Milk with +0.12% Fat & +0.08% Protein
- 39 Kgs Milk Solids
- Easy Calving
- Superb Linear (+3.23)
- Sexed Semen Available

EBI JAN. 22	SOURCE	ICBF	REL
EBI	236	76%	
Prod. SI	100	92%	
Fert. SI	77	79%	
Calv. SI	39	73%	
Beef. SI	-14	43%	
Maint. SI	2	40%	
Mgmt. SI	5	60%	
Health SI	27	71%	

EBI JAN. 22	SOURCE	ICBF	REL
EBI	205	49%	
Prod. SI	111	68%	
Fert. SI	29	38%	
Calv. SI	43	44%	
Beef. SI	-4	33%	
Maint. SI	-5	32%	
Mgmt. SI	-1	57%	
Health SI	30	62%	

PRODUCTION					
Milk Kg	Fat Kg	Protein Kg	Solid Kg	Fat %	Prot %
334	19	15	34	0.10	0.07

PRODUCTION					
Milk Kg	Fat Kg	Protein Kg	Solid Kg	Fat %	Prot %
363	21	17	38	0.12	0.08

FERTILITY	
Calving Interval	Survival
-3.30	2.82%

CALVING		
Gestation	Dairy Cow	Dairy Heifer
-3.40 (83% Rel.)	2.53 (85% Rel.)	6.21 (67% Rel.)

FERTILITY	
Calving Interval	Survival
-1.28	1.05%

CALVING		
Gestation	Dairy Cow	Dairy Heifer
-4.77 (34% Rel.)	3.07 (68% Rel.)	5.61 (49% Rel.)

Holstein Grazing Sires

S2181 BATENBURG MICHAEL

International ID

HOLNLDM000767606990

aAa: 453

PED



Alger Meekma

Batenburg Michael Daughter - Berti 116



Linear Trait Profile: ICBF Jan. 2022										
Overall		-3	-2	-1	0	1	2	3		
Body	Poor								Excellent	+0.19
Dairy Strength	Poor								Excellent	+0.05
Feet & Legs	Poor								Excellent	-0.06
Mammary	Poor								Excellent	+0.43
Conformation	Poor								Excellent	+0.41

MAIK X OMAN X NEWHOUSE SJOERD

- Trouble-Free, Late Maturing Cows
- Medium Sized, High Solids Daughters
- Easy Calving - Suitable for Maiden Heifers

EBI JAN. 22	SOURCE ICBF	REL
EBI	204	76%
Prod. SI	58	91%
Fert. SI	100	70%
Calv. SI	35	82%
Beef. SI	10	69%
Maint. SI	1	45%
Mgmt. SI	-5	64%
Health SI	6	73%



PRODUCTION					
Milk Kg	Fat Kg	Protein Kg	Solid Kg	Fat %	Prot %
182	10	9	19	0.05	0.05

FERTILITY	
Calving Interval	Survival
-4.36	3.65%

CALVING		
Gestation	Dairy Cow	Dairy Heifer
-3.17 (94%Rel.)	2.69 (90% Rel.)	5.17 (80% Rel.)

FR6832 J&G MARSMAN

International ID

HOLNLDM000944094860

aAa: 351

PED



Marsman Daughter



Linear Trait Profile: ICBF Jan. 2022										
Overall		-3	-2	-1	0	1	2	3		
Body	Poor								Excellent	+1.30
Dairy Strength	Poor								Excellent	+0.74
Feet & Legs	Poor								Excellent	+0.93
Mammary	Poor								Excellent	+1.10
Conformation	Poor								Excellent	+0.89

TRAWANT X KIAN X JEROM

- High Solids (+0.13% Fat & +0.09% Protein)
- Easy Calving - Suitable for Maiden Heifers
- Sexed Semen Available



EBI JAN. 22	SOURCE ICBF	REL
EBI	113	60%
Prod. SI	52	82%
Fert. SI	44	54%
Calv. SI	23	47%
Beef. SI	-6	37%
Maint. SI	4	36%
Mgmt. SI	-11	51%
Health SI	6	61%

PRODUCTION					
Milk Kg	Fat Kg	Protein Kg	Solid Kg	Fat %	Prot %
51	8	7	15	0.11	0.09

FERTILITY	
Calving Interval	Survival
-2.52	0.98%

CALVING		
Gestation	Dairy Cow	Dairy Heifer
-1.84 (37%Rel.)	2.25 (80% Rel.)	5.65 (43% Rel.)

FR6466 FARMERSWISHEXLOERCARUSO

International ID

HOLNLDM000661903733

aAa: 156

PED



Caruso Daughter - Trix 95



Linear Trait Profile: ICBF Jan. 2022

Overall		-3	-2	-1	0	1	2	3		
Body	Poor								Excellent	+0.50
Dairy Strength	Poor								Excellent	+0.56
Feet & Legs	Poor								Excellent	+1.41
Mammary	Poor								Excellent	+2.04
Conformation	Poor								Excellent	+2.03

BIG MALKI X RAMOS X LAUDAN

- What a Pedigree (Big Malki X Ramos X Laudan)
- Super Conformation in Young Stock Inspected
- Lovely Linear

EBI JAN. 22	SOURCE	ICBF	REL
EBI	133	72%	
Prod. SI	74	92%	
Fert. SI	23	67%	
Calv. SI	28	74%	
Beef. SI	-15	45%	
Maint. SI	12	43%	
Mgmt. SI	-3	63%	
Health SI	13	72%	



PRODUCTION

Milk Kg	Fat Kg	Protein Kg	Solid Kg	Fat %	Prot %
404	15	14	29	-0.01	0.00

FERTILITY

Calving Interval	Survival
-0.03	1.83%

CALVING

Gestation	Dairy Cow	Dairy Heifer
-3.16	2.84	6.62
(84%Rel.)	(87% Rel.)	(61% Rel.)

FR7836 WR CENTRUM

International ID

HOLDEUM000541017405

aAa: 153

PED



WR Miley (EX 91) - Dam



Linear Trait Profile: ICBF Jan. 2022

Overall		-3	-2	-1	0	1	2	3		
Body	Poor								Excellent	+1.33
Dairy Strength	Poor								Excellent	+1.16
Feet & Legs	Poor								Excellent	+2.93
Mammary	Poor								Excellent	+2.75
Conformation	Poor								Excellent	+3.20

CROWN RED X DIAMONDBACK X BREKEM

- Super High Solids New Bull
- Outcross Pedigree
- Colour, Components & Conformation
- Sexed Semen Available



EBI JAN. 22	SOURCE	ICBF	REL
EBI	174	51%	
Prod. SI	102	71%	
Fert. SI	68	38%	
Calv. SI	-3	48%	
Beef. SI	-13	36%	
Maint. SI	-11	34%	
Mgmt. SI	0	55%	
Health SI	30	61%	

PRODUCTION

Milk Kg	Fat Kg	Protein Kg	Solid Kg	Fat %	Prot %
302	21	14	35	0.15	0.07

FERTILITY

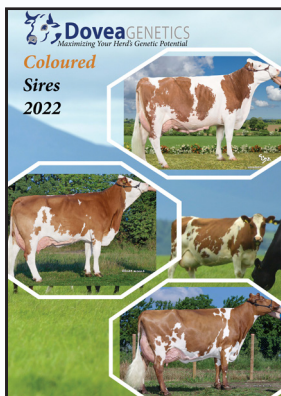
Calving Interval	Survival
-2.93	2.54%

CALVING

Gestation	Dairy Cow	Dairy Heifer
-1.15	3.71	8.75
(45%Rel.)	(65% Rel.)	(54% Rel.)

Other Directories Available

Coloured Sires 2022



We in Dovea Genetics are delighted to present to you the new line up of Coloured (dairy) Sires.

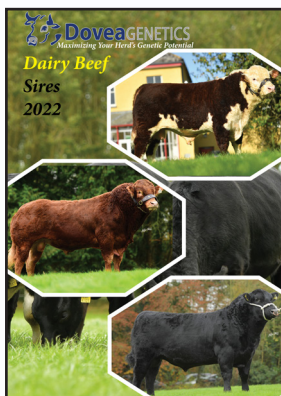
The bulls in this directory are selected to meet the demands of the Irish environment. They come from our own stud and renowned suppliers across the world. The main focus in the selection of these sires is in their ability to breed easy care daughters with high components and good fertility that will make money for you, the Irish dairy farmer. Directory includes Fleckvieh, Montbeliarde, Norwegian Red, Jersey & Crossbreds, MRI/Rotbunt, Dairy Shorthorn and Brown Swiss sires.

Elite Production Sires



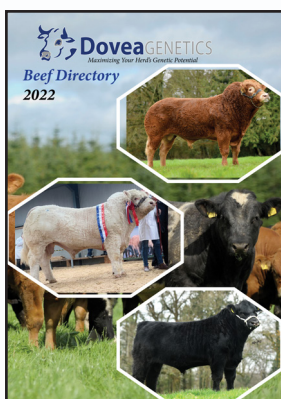
We are pleased to present you with an improved selection of high production dairy bulls to suit that farming system. This directory contains the best of bulls from our international agencies which have been carefully selected with the Irish dairy farmer in mind. The bulls are trait leaders in their country of origin and are selected based on a mixture of index, milk solids, pedigree, aAa scores and linear type traits. The increased demand for sexed semen in Ireland has been reflected in this directory with a large number of the bulls available in both conventional and sexed semen.

Dairy Beef Directory 2022



Our 2022 Dairy Beef Catalogue offers a massive range of beef sires for all dairy systems. We have bulls of all breeds boasting sky high dairy beef indices, carcass weight and of course calving ease specialists. Check out our Dairy Beef Catalogue for our new range of Triple Sires. This is a concentrated combination of three sires in one straw leading to increased conception rates. We have further improved our Angus, Limousin and Belgian Blue breeds for 2022.

Beef Directory 2022



Our 2022 Beef Catalogue will offer a massive range of beef sires for suckler and pedigree systems. Our beef programme strives for elite genetic advancement in all beef breeds with an expansive range of each.



Dovea Genetics D.I.Y. A.I. Training Courses

Dovea Genetics offer Ireland's most valuable, most complete, and professional D.I.Y. A.I. training approved by the DAFM. We offer personal attention from experienced personnel to maximise the learning experience for the participants. The courses run over four days and are a mixture of theory and practical experience. Upon successful completion of the course the successful participants will be issued with a training certificate from Dovea Genetics and a D.I.Y. A.I. Licence from DAFM. The current locations for training courses are County Tipperary, County Monaghan & County Tyrone.

If interested in the training course
Please don't hesitate to contact us on
0504-21755
or email rryan@doveagenetics.ie



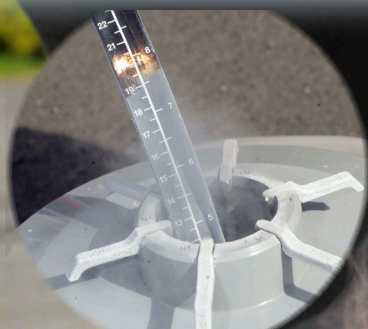
Dovea Genetics Liquid Nitrogen Service

Dovea Genetics have been supplying Liquid Nitrogen to thousands of valued customers nationwide for over two decades:

We offer a very efficient, reliable and cost-effective service with highly trained and experienced delivery personnel.

- We provide quarterly top ups of liquid nitrogen to your specified container
- We will also monitor and record the levels of liquid nitrogen in your tank at each visit
- You will be contacted and advised of a plan of action should your tank ever have a low reading
- Please note your AI flask and contents should be listed under your farm insurance
- We offer very keen rates for our quarterly service

Please don't hesitate to contact us if you require assistance on 0504-21755
or email ddunne@doveagenetics.ie



AREA REPRESENTATIVES



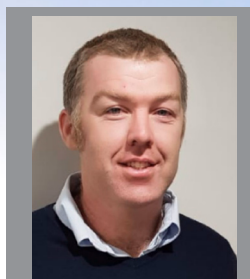
COLM CHAMBERS
CAVAN & MONAGHAN
087 6703093



JOHN O'REILLY
CLARE
087 7975471



PAT O'CONNOR
CORK
087 9209632



COLIN O'LEARY
MID & WEST CORK
087 6265990



PEARSE McNAMEE
DONEGAL
086 8106474



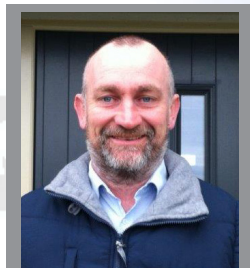
NICHOLAS BERGIN
GALWAY & OFFALY
086 2515869



TIM FITZMAURICE
KERRY
087 2359709



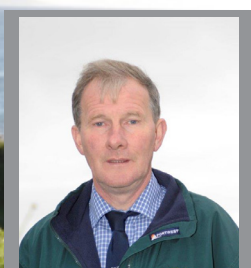
DENIS GALVIN
WEST KERRY
086 6095081



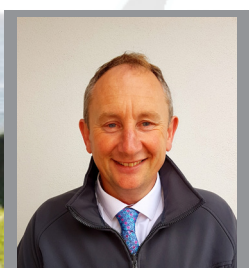
NEIL LAHART
KILKENNY, WATERFORD,
CARLOW & DUBLIN
086 2537087



TONY FLANNERY
LAOIS, KILDARE & TIPPERARY
086 8068006



MARTIN FLANAGAN
LEITRIM, MAYO & SLIGO
087 1226636



MICHAEL KINANE
LIMERICK
087 6252873



RONAN BEIRNE
LONGFORD & ROSCOMMON
083 4119955



KIERAN SHIELDS
LOUTH
086 8283315



PAT McCULLEN
MEATH & WESTMEATH
087 9062041



DAVID GOULDING
NORTH TIPPERARY
087 9380367



PATRICK GLEESON
WEXFORD & WICKLOW
086 3080595



PAT HACKETT
NORTHERN IRELAND
07946 094744

RISKS AND DISCLAIMERS

DOVEA GENETICS LIMITED ("DOVEA") AND SOUTH EASTERN CATTLE BREEDING SOCIETY LIMITED ("SECBS") DRAW YOUR ATTENTION TO THE FOLLOWING:

- ANY TYPOGRAPHICAL, CLERICAL, OR OTHER ERROR OR OMISSION, MISDESCRIPTION OR MISTAKE IN ANY SALES LITERATURE, QUOTATION, PRICE LIST, ORDER CONFIRMATION, INVOICE OR OTHER DOCUMENT OR INFORMATION ISSUED BY ANY OF DOVEA OR SECBS (INCLUDING WITHOUT LIMITATION THIS DIRECTORY) SHALL BE SUBJECT TO CORRECTION WITHOUT ANY LIABILITY ON THE PART OF ANY OF DOVEA OR SECBS. NO SUCH ERROR, MISDESCRIPTION OR MISTAKE SHALL GIVE RISE TO ANY RIGHT OF ACTION, CLAIM OR ENTITLEMENT TO COMPENSATION OF ANY NATURE WHATSOEVER OR ANY RIGHT OF TERMINATION OR REVISION.
- ALL SAMPLES, DRAWINGS, DESCRIPTIVE MATTER, SPECIFICATIONS, ADVERTISING OR ANY OTHER PROMOTIONAL MATERIAL AND ANY DESCRIPTIONS OR ILLUSTRATIONS CONTAINED IN ANY DIRECTORY, CATALOGUES OR BROCHURES (INCLUDING WITHOUT LIMITATION THIS DIRECTORY) ARE ISSUED OR PUBLISHED FOR THE SOLE PURPOSE OF GIVING AN APPROXIMATE IDEA OF THE GOODS AND/OR THE SERVICES DESCRIBED IN THEM AND DO NOT CONSTITUTE ANY MATTERS OF FACT OR REPRESENTATION OR WARRANTY AS TO ITS SUBJECT MATTER OR INDUCING ANY PERSON TO ENTER INTO ANY CONTRACT. THEY SHALL NOT FORM PART OF ANY CONTRACT AND THERE SHALL BE NO SALE BY SAMPLE.
- SEMEN IS THE PRODUCT OF A NATURAL BIOLOGICAL PROCESS OVER WHICH NEITHER DOVEA NOR SECBS HAS ANY DIRECT CONTROL AND NEITHER DOVEA NOR SECBS WARRANT OR REPRESENT THAT ANY SEMEN THAT ANY OF THEM SUPPLIES:
 - WILL RESULT IN A VIABLE PREGNANCY;
 - WILL PRODUCE A CALF THAT EXHIBITS ALL OR ANY OF THE CHARACTERISTICS DESCRIBED IN ANY PROOF;
 - WILL BE FREE FROM DEFECTS, INCLUDING GENETIC DEFECTS; OR
 - WILL YIELD A PARTICULAR NUMBER OF CALVES.
- IN THE CASE OF SEXED SEMEN, NEITHER DOVEA NOR SECBS WARRANTS OR REPRESENTS THAT THE SORTING LEVELS REFERRED TO IN ITS MARKETING LITERATURE WILL RESULT IN A CORRESPONDING SEX RATIO IN CALVES PRODUCED FROM SEMEN.

ALL ORDERS FOR ANY OF THE GOODS AND/OR SERVICES REFERRED TO IN THIS DIRECTORY SHALL BE SUBJECT TO DOVEA AND SECBS' TERMS AND CONDITIONS FOR THE SUPPLY OF GOODS AND/OR SERVICES AS AMENDED FROM TIME TO TIME. THE CURRENT VERSION OF SUCH TERMS CAN BE READ AT WWW.DOVEAGENETICS.IE. YOUR ATTENTION IS DRAWN TO THE PROVISIONS OF THOSE TERMS HEADED:

- APPLICATION OF CONDITIONS AND FORMATION OF CONTRACT
- DESCRIPTION OF GOODS OR SERVICES
- SEMEN DISTRIBUTION SERVICES
- CUSTOMER'S OBLIGATIONS
- WARRANTIES
- LIMITATION OF LIABILITY



Thurles, Co Tipperary, Ireland, E41 FH28

Tel: +353 (0) 504 21755

E: info@doveagenetics.ie

www.doveagenetics.ie

