

## *Dairy Beef*

**Sires**  
**2022**



## RISKS AND DISCLAIMERS

**DOVEA GENETICS LIMITED ("DOVEA") AND SOUTH EASTERN CATTLE BREEDING SOCIETY LIMITED ("SECBS") DRAW YOUR ATTENTION TO THE FOLLOWING:**

1 ANY TYPOGRAPHICAL, CLERICAL, OR OTHER ERROR OR OMISSION, MISDESCRIPTION OR MISTAKE IN ANY SALES LITERATURE, QUOTATION, PRICE LIST, ORDER CONFIRMATION, INVOICE OR OTHER DOCUMENT OR INFORMATION ISSUED BY ANY OF DOVEA OR SECBS (INCLUDING WITHOUT LIMITATION THIS DIRECTORY) SHALL BE SUBJECT TO CORRECTION WITHOUT ANY LIABILITY ON THE PART OF ANY OF DOVEA OR SECBS. NO SUCH ERROR, MISDESCRIPTION OR MISTAKE SHALL GIVE RISE TO ANY RIGHT OF ACTION, CLAIM OR ENTITLEMENT TO COMPENSATION OF ANY NATURE WHATSOEVER OR ANY RIGHT OF TERMINATION OR RECISSION.

2 ALL SAMPLES, DRAWINGS, DESCRIPTIVE MATTER, SPECIFICATIONS, ADVERTISING OR ANY OTHER PROMOTIONAL MATERIAL AND ANY DESCRIPTIONS OR ILLUSTRATIONS CONTAINED IN ANY DIRECTORY, CATALOGUES OR BROCHURES (INCLUDING WITHOUT LIMITATION THIS DIRECTORY) ARE ISSUED OR PUBLISHED FOR THE SOLE PURPOSE OF GIVING AN APPROXIMATE IDEA OF THE GOODS AND/OR THE SERVICES DESCRIBED IN THEM AND DO NOT CONSTITUTE ANY MATTERS OF FACT OR REPRESENTATION OR WARRANTY AS TO ITS SUBJECT MATTER OR INDUCING ANY PERSON TO ENTER INTO ANY CONTRACT. THEY SHALL NOT FORM PART OF ANY CONTRACT AND THERE SHALL BE NO SALE BY SAMPLE.

3 SEMEN IS THE PRODUCT OF A NATURAL BIOLOGICAL PROCESS OVER WHICH NEITHER DOVEA NOR SECBS HAS ANY DIRECT CONTROL AND NEITHER DOVEA NOR SECBS WARRANT OR REPRESENT THAT ANY SEMEN THAT ANY OF THEM SUPPLIES:

- (i) WILL RESULT IN A VIABLE PREGNANCY;
- (ii) WILL PRODUCE A CALF THAT EXHIBITS ALL OR ANY OF THE CHARACTERISTICS DESCRIBED IN ANY PROOF;
- (iii) WILL BE FREE FROM DEFECTS, INCLUDING GENETIC DEFECTS; OR
- (iv) WILL YIELD A PARTICULAR NUMBER OF CALVES.

4 IN THE CASE OF SEXED SEMEN, NEITHER DOVEA NOR SECBS WARRANTS OR REPRESENTS THAT THE SORTING LEVELS REFERRED TO IN ITS MARKETING LITERATURE WILL RESULT IN A CORRESPONDING SEX RATIO IN CALVES PRODUCED FROM SEMEN.

**ALL ORDERS FOR ANY OF THE GOODS AND/OR SERVICES REFERRED TO IN THIS DIRECTORY SHALL BE SUBJECT TO DOVEA AND SECBS' TERMS AND CONDITIONS FOR THE SUPPLY OF GOODS AND/OR SERVICES AS AMENDED FROM TIME TO TIME. THE CURRENT VERSION OF SUCH TERMS CAN BE READ AT [WWW.DOVEA-GENETICS.IE](http://WWW.DOVEA-GENETICS.IE). YOUR ATTENTION IS DRAWN TO THE PROVISIONS OF THOSE TERMS HEADED:**

- a) APPLICATION OF CONDITIONS AND FORMATION OF CONTRACT
- b) DESCRIPTION OF GOODS OR SERVICES
- c) SEMEN DISTRIBUTION SERVICES
- d) CUSTOMER'S OBLIGATIONS
- e) WARRANTIES
- f) LIMITATION OF LIABILITY

## HOW TO USE OUR QR CODES TO VIEW UP TO DATE ICBF FIGURES



1. Open the camera on your smartphone



3. The ICBF webpage linked to the QR code will appear



2. Point the camera at the QR code printed on the page and click the link that appears on screen



# Contents

		Page
<b>Angus</b>		
AA7188	Kealkil Stockman	4
AA4743	Kealkil Prime Lad	5
ZLT	Birches Littleman L923	6
AA5217	Kilmacanann Philip	6
AA4603	Dunard Navigator	7
AA2259	Portauns Volcano	8
AA2163	Liss Brendan	9
AA4638	Keirsbeath Karma	10
AA4303	Lisduff Red Pepper	11
<b>Hereford</b>		
HE7374	Timolinpoll 1 Hercules	12
HE4105	Connelvin Ollie	13
HE7545	Skehanore Fruitful	14
HE7548	Corlismore Cormac	15
<b>Limousin</b>		
LM5443	Brooklands Marco	16
LM2014	Ewdenvale Ivor	17
LM3719	Creggpark Pat	18
LM7077	Carrowreagh Pablo	18
<b>Charolais</b>		
S2014	Sicilien	19
CH6487	Indou PP	20
CH6292	Knockmahon Opel	20
<b>Aubrac</b>		
AU6286	Johnstown Nelson 1039	21
<b>Simmental</b>		
SI7353	Clonagh Longshot	22
SI4336	Tulla Harry Potter	22
<b>Belgian Blue</b>		
BB4438	An De Beaufaux	23
BB4597	Affute De Thiboumont	24
BB4494	Bricolage De Beaufaux	25
BB5214	Bistouri De Tohogne	26
<b>Speckle Park</b>		
SP4866	Ballylough Edward	28
SP7347	Kilbarry Harper	27
<b>Other Breeds</b>		
SA6253	Montesqieu	29
PT2165	Gainsbarre	29
<b>Triple Bulls</b>		
AAM113	Triple Angus	30
BBM104	Triple Blue	31
LMM107	Triple Limousin	31

## Symbols



1. Easy Calving – Identifies Easy Calving Sires



2. Proven- High Reliability Sire



3. Beef Value – High Carcass Genetic Potential



4. €DBI – High Dairy Beef Index



5. Homozygous Polled – PP



6. Heterozygous Polled - Pp



7. Test Sire



8. Short Gestation Sire

# AA7188

## KEALKIL STOCKMAN

International ID  
AANIRLM215107640529

DOB: 25-AUG-2019



ANGUS

- ◇ Born at an Incredible 272 Day Gestation Period with a Birthweight of 32 Kgs
- ◇ Backed Up by Three Generations of Proven Easy-Calving & Short-Gestation Pedigrees
- ◇ Ideal Choice for Later Calving Cows

Trait	Value	Reliability %
Dairy Beef Index €	€97	54
Dairy Cow CD%	2.1	58
Dairy Heifer CD%	6.3	54
Gestation Length Days	--	--
Carcass Weight (Kgs)	3.3	54

 DoveaGENETICS





# AA4743

## KEALKIL PRIME LAD

International ID

AANIRLM141089640493

DOB: 07-SEP-2017



ANGUS

- ◇ Dovea's No.1 Angus Sire Available on Dairy Beef Index
- ◇ Incredible Calving Ease on Both Dairy Cows and Heifers
- ◇ Extreme Short Gestation at 280 Days
- ◇ Excellent Calf Quality with Performance
- ◇ Male Sexed Semen Available
- ◇ The Angus Sire that Ticks All the Boxes

Trait	Value	Reliability %
Dairy Beef Index €	€114	86
Dairy Cow CD%	1.9	95
Dairy Heifer CD%	4.8	86
Gestation Length Days	280	99
Carcass Weight (Kgs)	3.4	82

 DoveaGENETICS



ANGUS



# ZLT BIRCHES LITTLEMAN L923

International ID

DOB: 04-MAR-2011

AANGBRM921159600923



◇ Short Gestation Sire

◇ Very Easy Calving

◇ Exceptional Calf Quality



# AA5217 KILMACANANN PHILIP

International ID

DOB: 16-APR-2017

AANIRLM217921710294



◇ Extreme Short Gestation Sire -  
279 Days

◇ Easy Calving Choice for Dairy  
Cows

◇ Ideal for Selling as Calves



Trait	Value	Reliability %
Dairy Beef Index €	€83	97
Dairy Cow CD%	2.4	99
Dairy Heifer CD%	7.7	99
Gestation Length Days	282	99
Carcass Weight (Kgs)	-2.6	99

Trait	Value	Reliability %
Dairy Beef Index €	€77	64
Dairy Cow CD%	2.8	75
Dairy Heifer CD%	7.9	60
Gestation Length Days	279	84
Carcass Weight (Kgs)	4.9	54



# AA4603

## DUNARD NAVIGATOR

International ID  
AANIRLM341595150024

DOB: 17-OCT-2016



ANGUS

- ◆ Exciting New Addition to Dovea's Dairy Beef Range for 2022
- ◆ Huge Carcass Weight Combined with Average Calving Difficulty on Dairy Cows
- ◆ Ideal Choice for Dairy Farmers in a Finishing System

Trait	Value	Reliability %
Dairy Beef Index €	€83	73
Dairy Cow CD%	3.4	61
Dairy Heifer CD%	9.5	49
Gestation Length Days	282	93
Carcass Weight (Kgs)	14.2	86

 DoveaGENETICS



ANGUS



# AA2259

## PORTAUNS VOLCANO

International ID  
AANIRLM241300970643

DOB: 06-SEP-2014



ANGUS

- ◇ Easy Calving Combined with Excellent Calf Quality
- ◇ Superb Option for Farmers Selling Calves
- ◇ Ideal Choice for Well Grown Holstein Heifers

Trait	Value	Reliability %
Dairy Beef Index €	€50	95
Dairy Cow CD%	2.5	99
Dairy Heifer CD%	6.7	99
Gestation Length Days	283	99
Carcass Weight (Kgs)	-9.9	99

 DoveaGENETICS





# AA2163 LISS BRENDAN

International ID  
AANIRLM281074251465

DOB: 20-APR-2014



ANGUS

- ◇ Dovea's Longest Proven Angus Sire for Dairy Cows
- ◇ Huge Farmer Satisfaction with Progeny on all Aspects from Birth to Slaughter
- ◇ Brendan Is a Trouble-Free Option for Dairy Cows to Produce Quality Offspring

Trait	Value	Reliability %
Dairy Beef Index €	€62	97
Dairy Cow CD%	2.8	99
Dairy Heifer CD%	8.6	97
Gestation Length Days	284	99
Carcass Weight (Kgs)	2.7	99

 DoveaGENETICS



ANGUS



# AA4638

## KEIRSBEATH KARMA

International ID

AANGBRM541635200539

DOB: 25-APR-2016



ANGUS

- ◆ Karma is the Carcass King of The Angus World
- ◆ Progeny are Big, Long, Powerful Cattle with Exceptional Weight for Age
- ◆ Average Calving Difficulty on Dairy Cows
- ◆ Ideal Choice to Produce High Value, Profitable, Finishing Cattle

Trait	Value	Reliability %
Dairy Beef Index €	€67	75
Dairy Cow CD%	3.6	77
Dairy Heifer CD%	13.7	59
Gestation Length Days	284	96
Carcass Weight (Kgs)	15.6	81

 Dovea GENETICS





# AA4303

## LISDUFF RED PEPPER

International ID  
AANIRLM121657651368

DOB: 04-OCT-2015



ANGUS

- ◇ High Performance Red Angus Sire with Superb Calving Ease
- ◇ Red Pepper is in the Top 10% of the Angus Breed for Carcass Weight and Conformation
- ◇ Uniquely Versatile Bull to suit All Dairy Systems

Trait	Value	Reliability %
Dairy Beef Index €	€97	88
Dairy Cow CD%	2.9	88
Dairy Heifer CD%	9.2	75
Gestation Length Days	284	98
Carcass Weight (Kgs)	14.0	97

 DoveaGENETICS



ANGUS



# HE7374

## TIMOLINPOLL 1 HERCULES

International ID  
HERIRLM225902830080

DOB: 05-NOV-2019



HEREFORD

- ◆ New High DBI Hereford Sire for Dovea's Dairy Beef Panel
- ◆ Trait Leader on Gestation Length, Calving Ease and Carcass Weight
- ◆ Purchased in Association with Irish Hereford Prime for their Beef Sustainability Programme

Trait	Value	Reliability %
Dairy Beef Index €	€78	49
Dairy Cow CD%	2.5	55
Dairy Heifer CD%	9.2	44
Gestation Length Days	--	--
Carcass Weight (Kgs)	9.6	46





# HE4105 CONMELVIN OLLIE

International ID  
HERIRLM241427991478

DOB: 25-SEP-2015



HEREFORD

- ◆ Superb Hereford Bull for Dairy Cows
- ◆ Easy Calving Combined with Excellent Calf Quality
- ◆ Progeny Are Top Performers on The Irish Farmers Journal Thrive Demo Farm

Trait	Value	Reliability %
Dairy Beef Index €	€26	93
Dairy Cow CD%	4.2	99
Dairy Heifer CD%	10.7	89
Gestation Length Days	285	99
Carcass Weight (Kgs)	2.2	99

 DoveaGENETICS



HEREFORD



# HE7545 SKEHANORE FRUITFUL

International ID

HERIRLM219970511001

DOB: 04-NOV-2019



HEREFORD

- ✦ Exciting New High DBI Hereford Sire for Dovea's Dairy Beef Panel
- ✦ Trait Leader for Carcass Traits, Gestation Length and DBI
- ✦ Purchased in Association with Irish Hereford Prime for their Beef Sustainability Programme

Trait	Value	Reliability %
Dairy Beef Index €	€81	45
Dairy Cow CD%	3.0	50
Dairy Heifer CD%	8.9	42
Gestation Length Days	--	--
Carcass Weight (Kgs)	12.5	46



# HE7548

## CORLISMORE CORMAC

International ID  
HERIRLM214481691076

DOB: 16-JAN-2020



HEREFORD

- ◆ Cormac Displays All the Great Attributes of The Hereford Breed
- ◆ Seriously Well-Made Bull with Length, Width and Full of Breed Character
- ◆ Purchased in Association with Irish Hereford Prime for their Beef Sustainability Programme
- ◆ Similar Type Bull to the Old Favourite 'GGM'

Trait	Value	Reliability %
Dairy Beef Index €	€58	48
Dairy Cow CD%	3.2	53
Dairy Heifer CD%	7.9	44
Gestation Length Days	--	--
Carcass Weight (Kgs)	6.7	48



HEREFORD





# LM5443

## BROOKLANDS MARCO

International ID

LIMIRLM215581331640

DOB: 13-APR-2017



LIMOUSIN

- ◇ Short Gestation Limousin Sire for Dairy Cows
- ◇ 287 Day Gestation Length
- ◇ Average Calving Difficulty Combined with Excellent Carcass Traits
- ◇ Exceptional Calves Born from Dairy Cows

Trait	Value	Reliability %
Dairy Beef Index €	€129	70
Dairy Cow CD%	5.8	78
Dairy Heifer CD%	9.3	45
Gestation Length Days	287	98
Carcass Weight (Kgs)	29.1	63

 DoveaGENETICS



# LM2014 EWDENVALE IVOR

International ID  
LIMGBRM000WLD13-335

DOB: 26-APR-2013



LIMOUSIN

- ◆ The King of the Dairy Beef World
- ◆ Ranked Number 1 on the ICBF Dairy Beef Active Bull List
- ◆ Huge Overall DBI of €143
- ◆ Ticks All the Boxes – Gestation, Calving Ease, Carcass Weight and Conformation
- ◆ Male Sexed Semen Available

Trait	Value	Reliability %
Dairy Beef Index €	€143	97
Dairy Cow CD%	3.8	98
Dairy Heifer CD%	8.5	83
Gestation Length Days	288	99
Carcass Weight (Kgs)	29.8	99

 DoveaGENETICS



LIMOUSIN

# LM3719 CREGGPARK PAT

International ID DOB: 03-DEC-2019  
LIMIRLM214784640351



- ♦ Three Generations of Easy Calving, Short Gestation Pedigree
- ♦ Pat was Born at 283 Days Gestation at a Birth Weight of 39 Kgs
- ♦ Purchased in Association with the Irish Limousin Cattle Society for their Short Gestation Programme



# LM7077 CARROWREAGH PABLO

International ID DOB: 03-SEP-2019  
LIMIRLM219211850524



- ♦ Easy Calving Pedigree Including the Renowned Kaprico Eravelle
- ♦ Trait Leader on Calving Traits and Performance
- ♦ Purchased In Association with the Irish Limousin Cattle Society for Their Short Gestation Programme



Trait	Value	Reliability %
Dairy Beef Index €	€131	48
Dairy Cow CD%	5.1	52
Dairy Heifer CD%	10.6	39
Gestation Length Days	--	--
Carcass Weight (Kgs)	29.9	47

Trait	Value	Reliability %
Dairy Beef Index €	€127	48
Dairy Cow CD%	4.9	51
Dairy Heifer CD%	10.8	39
Gestation Length Days	--	--
Carcass Weight (Kgs)	28.6	47



# S2014 SICILIEN

International ID  
CHAFRAM006337672766

DOB: 12-DEC-2001



CHAROLAIS

- ◇ One of Ireland's Leading Charolais Sires Available on DBI
- ◇ Short Gestation at 285 Days (Top 1% Of the Breed)
- ◇ Proven Easy Calving Charolais Sire on Dairy Cows
- ◇ Excellent Calf Quality

Trait	Value	Reliability %
Dairy Beef Index €	€58	85
Dairy Cow CD%	7.2	84
Dairy Heifer CD%	15.3	35
Gestation Length Days	285	97
Carcass Weight (Kgs)	25.8	98

 DoveaGENETICS



CHAROLAIS



# CH6487 INDOU PP

International ID  
CHAFRAM003615364745

DOB: 11-DEC-2013



# CH6292 KNOCKMAHON OPEL

International ID  
CHAIRLM213018992296

DOB: 11-DEC-2018



- ◇ Huge DBI of €100
- ◇ Proven Easy Calver in France
- ◇ Homozygous Polled Sire – All Calves Will Be Polled
- ◇ Indou PP Scores Well on All Terminal Traits



- ◇ Sired By the Famous Proven Easy Calving Sire Bivouac
- ◇ The Perfect Choice for Mature Dairy Cows to Produce Fast Thriving Profitable Dairy Beef Calves



Trait	Value	Reliability %
Dairy Beef Index €	€100	46
Dairy Cow CD%	6.3	34
Dairy Heifer CD%	11.8	24
Gestation Length Days	290	59
Carcass Weight (Kgs)	38.5	64

Trait	Value	Reliability %
Dairy Beef Index €	€39	48
Dairy Cow CD%	8.8	52
Dairy Heifer CD%	14.0	32
Gestation Length Days	--	--
Carcass Weight (Kgs)	30.5	47

# AU6286

## JOHNSTOWN NELSON 1039

International ID

AUBIRLM213578621924

DOB: 18-OCT-2018



AUBRAC

- ◇ Huge DBI of €146
- ◇ Carcass Weight, Conformation and Calving Ease in the One Package
- ◇ Hugely Popular Choice for Dairy Cows in 2021

Trait	Value	Reliability %
Dairy Beef Index €	€146	47
Dairy Cow CD%	3.2	49
Dairy Heifer CD%	9.4	32
Gestation Length Days	286	63
Carcass Weight (Kgs)	23.7	47

 DoveaGENETICS



AUBRAC





# SI7353 CLONAGH LONGSHOT

International ID  
SIMIRLM213054191623

DOB: 04-DEC-2019



- ♦ Excellent New Simmental Bull  
Purchased for the Easy Calving Market
- ♦ Both Sire 'PHS Polled Worldwide' and Grandsire 'Bawny T-Rex' Are Both Proven Easy Calvers
- ♦ Heterozygous Polled Sire



# SI4336 TULLA HARRY POTTER

International ID  
SIMIRLM131828020938

DOB: 21-APR-2016



- ♦ Proven Easy Calving Simmental Sire for Dairy Cows
- ♦ Excels on Gestation Length (286 Days)
- ♦ Superb Calves Born from Dairy Cows



Trait	Value	Reliability %
Dairy Beef Index €	€65	43
Dairy Cow CD%	6.6	43
Dairy Heifer CD%	11.7	31
Gestation Length Days	--	--
Carcass Weight (Kgs)	28.7	47

Trait	Value	Reliability %
Dairy Beef Index €	€39	63
Dairy Cow CD%	5.0	66
Dairy Heifer CD%	9.7	39
Gestation Length Days	286	86
Carcass Weight (Kgs)	14.5	65

# BB4438

## AN DE BEAUFFAUX

International ID

BBLBELM000556713602

DOB: 31-DEC-2015



BELGIAN BLUE

- ◇ Proven Easy Calving, Short Gestation Belgian Blue Sire
- ◇ Calving Figure of 110 in Holland
- ◇ Short Gestation Sire - 285 Days
- ◇ Huge Farmer Satisfaction with Progeny Born on Irish Farms
- ◇ **Carries The Red Factor**

Trait	Value	Reliability %
Dairy Beef Index €	€42	77
Dairy Cow CD%	8.9	95
Dairy Heifer CD%	14.3	38
Gestation Length Days	285	98
Carcass Weight (Kgs)	22.6	66

 DoveaGENETICS



BELGIAN BLUE



# BB4597

## AFFUTE DE THIBOUMONT

International ID

BBLBELM000658487162

DOB: 16-MAY-2016



BELGIAN BLUE

- ♦ Extremely Short Gestation Belgian Blue Sire
- ♦ 282 Days Gestation (Top 1% of the Breed)
- ♦ Exceptional Calf Quality
- ♦ Ideal Choice for Mature Holstein Cows

Trait	Value	Reliability %
Dairy Beef Index €	€29	74
Dairy Cow CD%	10.4	83
Dairy Heifer CD%	18.4	35
Gestation Length Days	282	95
Carcass Weight (Kgs)	30.6	75

 DoveaGENETICS





# BB4494

## BRICOLAGE DE BEAUF-

International ID

BBLBELM000056713627

DOB: 18-APR-2016



BELGIAN BLUE

- ◇ High DBI Belgian Blue Sire
- ◇ Proven Easy Calver 7.5% C.D. on Dairy Cows
- ◇ Short Gestation Choice
- ◇ The Complete Package – Calving Ease, Gestation and Calf Quality

Trait	Value	Reliability %
Dairy Beef Index €	€110	56
Dairy Cow CD%	7.5	57
Dairy Heifer CD%	11.8	26
Gestation Length Days	285	75
Carcass Weight (Kgs)	29.2	59

 DoveaGENETICS



BELGIAN BLUE



# BB5214

## BISTOURI DE TOHOGNE

International ID

BBLBELM000463663299

DOB: 29-APR-2018



BELGIAN BLUE

- ◆ The Bull for Top Notch Calves
- ◆ Average Calving Combined with Exceptional Calves
- ◆ The Perfect Choice for Holstein Cows

Trait	Value	Reliability %
Dairy Beef Index €	€67	39
Dairy Cow CD%	8.7	40
Dairy Heifer CD%	13.2	28
Gestation Length Days	287	69
Carcass Weight (Kgs)	28.9	36

 DoveaGENETICS



# SP4866

## BALLYLOUGH EDWARD

International ID

SPZGBRM91516930254

DOB: 23-MAR-2017



SPECKLE PARK

- ◆ Edward Is Breeding Excellent Well-Made Calves from Dairy Cows
- ◆ Easy Calving Choice on Cows
- ◆ Hugely Popular Choice for Dairy Cows In 2021

Trait	Value	Reliability %
Dairy Beef Index €	€14	84
Dairy Cow CD%	3.3	95
Dairy Heifer CD%	7.8	75
Gestation Length Days	287	99
Carcass Weight (Kgs)	-2.9	81

 DoveaGENETICS



SPECKLE PARK





# SP7347

## KILBARRY HARPER

International ID

SPZIRLM212169780491

DOB: 26-FEB-2020



SPECKLE PARK

- ◆ New Speckle Park Addition
- ◆ Harper is the Recommended Colour to Breed the Proper Speckled Colour from Dairy Cows
- ◆ Difficulty 2021

Trait	Value	Reliability %
Dairy Beef Index €	€25	38
Dairy Cow CD%	3.4	39
Dairy Heifer CD%	9.7	31
Gestation Length Days	--	--
Carcass Weight (Kgs)	-2.5	42

 DoveaGENETICS



# SA6253 MONTESQIEU

International ID DOB: 08-NOV-2015  
SALFRAM001536125009



- ♦ Short Gestation, High DBI Saler Sire
- ♦ Easy Calving Choice on Dairy Cows (3.0% C.D. on Dairy Cows)
- ♦ Ideal Continental Choice for Dairy Cows Without Compromising on Calving



# PT2165 GAINSBARRE

International ID DOB: 19-FEB-2011  
PARFRAM008611331928



- ♦ One Of Ireland's Leading Sires Available On DBI
- ♦ Incredible +43.2 Kgs Carcass Weight
- ♦ Super Choice to Produce Profitable Finishing Cattle



Trait	Value	Reliability %
Dairy Beef Index €	€127	41
Dairy Cow CD%	3.0	38
Dairy Heifer CD%	6.9	31
Gestation Length Days	285	69
Carcass Weight (Kgs)	21.7	45

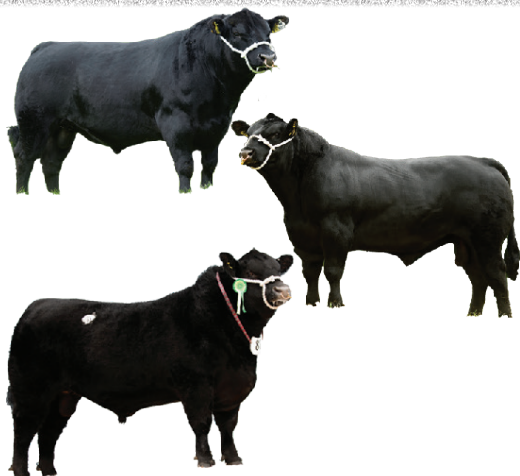
Trait	Value	Reliability %
Dairy Beef Index €	€161	52
Dairy Cow CD%	4.8	40
Dairy Heifer CD%	9.1	23
Gestation Length Days	289	79
Carcass Weight (Kgs)	43.2	67

# TRIPLE RANGE

Sperm from different bulls have varying capacitation times so depending on when a cow ovulates, sperm may have become obsolete when required to fertilize. By pooling sperm there is increased capacitation variability which overall provides a greater opportunity for fertilisation of an oocyte.

In the dairy beef market, mixed beef semen not only gives you the possibility of producing a high value beef animal but there are the added benefits of increased conception rates with using the product also. Mixed semen has been sold for the last two decades in both Europe and the USA with growing demand based on results.

## DOVEA GENETICS TRIPLE ANGUS



**AI CODE:  
AAM113**

Bull 1	Keirsbeath Karma	AA4638
Bull 2	Kilmacannan Philip	AA5217
Bull 3	Lisduff Leonardo	AA4305



## DOVEA GENETICS TRIPLE BLUE



**AI CODE:  
BBM104**

Bull 1	Affute de Thiboumont	BB4597
Bull 2	An de Beauffaux	BB4438
Bull 3	Haubert Du Fond de Bois	BB5325

## DOVEA GENETICS TRIPLE LIMOUSIN

**AI CODE:  
LMM107**



Bull 1	Brooklands Marco	LM5443
Bull 2	Garnedd Nelson	LM4851
Bull 3	Ewdenvale Ivor	LM2014

TRIPLE RANGE



Thurles, Co Tipperary, Ireland, E41 FH28

Tel: +353 (0) 504 21755

E: [info@doveagenetics.ie](mailto:info@doveagenetics.ie)

[www.doveagenetics.ie](http://www.doveagenetics.ie)

